

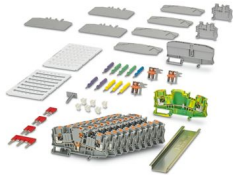
# PTME 6-SET POWER - Starter kit



3035991

<https://www.phoenixcontact.com/sg/products/3035991>

Please be informed that the data shown in this PDF document is generated from our online catalog. Please find the complete data in the user documentation. Our general terms of use for downloads are valid.



Starter kit, consisting of test disconnect terminal blocks with push-in connection technology, marking material, bridging and test accessories. A terminal strip for a three-phase transformer circuit (current and voltage) can be configured individually.

## Commercial data

|                                      |               |
|--------------------------------------|---------------|
| Item number                          | 3035991       |
| Packing unit                         | 1 pc          |
| Minimum order quantity               | 1 pc          |
| Sales key                            | *****         |
| Product key                          | BE2233        |
| GTIN                                 | 4046356428262 |
| Weight per piece (including packing) | 676.233 g     |
| Weight per piece (excluding packing) | 529 g         |
| Customs tariff number                | 85369010      |
| Country of origin                    | DE            |

# PTME 6-SET POWER - Starter kit



3035991

<https://www.phoenixcontact.com/sg/products/3035991>

## Set consists of

### PTME 6 - Test disconnect terminal block

3212170

<https://www.phoenixcontact.com/sg/products/3212170>



Test disconnect terminal block, nom. voltage: 500 V, nominal current: 30 A, connection method: Push-in connection, 1 level, Rated cross section: 6 mm<sup>2</sup>, cross section: 0.5 mm<sup>2</sup> - 10 mm<sup>2</sup>, color: gray

---

### PTMED 6-PE - Ground terminal

3212196

<https://www.phoenixcontact.com/sg/products/3212196>



Ground terminal, connection method: Push-in connection, 1 level, cross section: 0.5 mm<sup>2</sup> - 10 mm<sup>2</sup>, color: green-yellow

# PTME 6-SET POWER - Starter kit



3035991

<https://www.phoenixcontact.com/sg/products/3035991>

## D-DTME 6 - End cover

3034426

<https://www.phoenixcontact.com/sg/products/3034426>

End cover, depth: 49.6 mm, width: 2.2 mm, height: 99.8 mm, color: gray



---

## ATP-URTK/SP - Partition plate

0311139

<https://www.phoenixcontact.com/sg/products/0311139>

Partition plate, depth: 64 mm, width: 2 mm, height: 99 mm, color: gray



# PTME 6-SET POWER - Starter kit

3035991

<https://www.phoenixcontact.com/sg/products/3035991>



## CARRIER 35-8 - Partition plate

3034387

<https://www.phoenixcontact.com/sg/products/3034387>

Partition plate, With storage option for FBS...-8 and PAI 4-FIX, material: PA, color: gray



---

## SB-ME 2-8 - Bridge bar

3034468

<https://www.phoenixcontact.com/sg/products/3034468>

Bridge bar, pitch: 8.2 mm, number of positions: 2, length: 25 mm, color: gray/orange



# PTME 6-SET POWER - Starter kit

3035991

<https://www.phoenixcontact.com/sg/products/3035991>



## FBS 2-8 - Plug-in bridge

3030284

<https://www.phoenixcontact.com/sg/products/3030284>



Plug-in bridge, pitch: 8.2 mm, number of positions: 2, color: red

---

## FBS 1/3/5-8 - Plug-in bridge

3032389

<https://www.phoenixcontact.com/sg/products/3032389>



Plug-in bridge, pitch: 8.2 mm, number of positions: 5, pin assignment: 1,3,5, color: red

# PTME 6-SET POWER - Starter kit



3035991

<https://www.phoenixcontact.com/sg/products/3035991>

## PAI-4-FIX YE - Test adapter

3032745

<https://www.phoenixcontact.com/sg/products/3032745>



Test adapter, Touch proof against unintentional direct contact according to DIN EN 50274 when plugged in, for 4 mm test plug and terminal blocks with 8.2 mm pitch, number of positions: 1, color: yellow

---

## PAI-4-FIX GN - Test adapter

3032758

<https://www.phoenixcontact.com/sg/products/3032758>



Test adapter, Touch proof against unintentional direct contact according to DIN EN 50274 when plugged in, for 4 mm test plug and terminal blocks with 8.2 mm pitch, number of positions: 1, color: green

# PTME 6-SET POWER - Starter kit



3035991

<https://www.phoenixcontact.com/sg/products/3035991>

## PAI-4-FIX VT - Test adapter

3032761

<https://www.phoenixcontact.com/sg/products/3032761>



Test adapter, Touch proof against unintentional direct contact according to DIN EN 50274 when plugged in, for 4 mm test plug and terminal blocks with 8.2 mm pitch, number of positions: 1, color: violet

---

## PAI-4-FIX BU - Test adapter

3032729

<https://www.phoenixcontact.com/sg/products/3032729>



Test adapter, Touch proof against unintentional direct contact according to DIN EN 50274 when plugged in, for 4 mm test plug and terminal blocks with 8.2 mm pitch, number of positions: 1, color: blue

# PTME 6-SET POWER - Starter kit

3035991

<https://www.phoenixcontact.com/sg/products/3035991>



## S-ME 6 - Switching lock

3034439

<https://www.phoenixcontact.com/sg/products/3034439>

Switching lock, width: 8.2 mm, height: 12 mm, color: white



---

## CLIPFIX 35-5 - End bracket

3022276

<https://www.phoenixcontact.com/sg/products/3022276>

Quick mounting end clamp for NS 35/7,5 DIN rail or NS 35/15 DIN rail, with marking option, with parking option for FBS...5, FBS...6, KSS 5, KSS 6, width: 5.15 mm, color: gray





# PTME 6-SET POWER - Starter kit



3035991

<https://www.phoenixcontact.com/sg/products/3035991>

## KLM 3 - Terminal strip marker carrier

0811969

<https://www.phoenixcontact.com/sg/products/0811969>

Terminal strip marker carrier, adjustable height, for CLIPFIX 15, CLIPFIX 35, and CLIPFIX 35-5 end brackets, can be marked using labels in 20 x 8 mm format



---

## UC-EMLP (20X8) - Plastic label

0819327

<https://www.phoenixcontact.com/sg/products/0819327>

Plastic label, Sheet, white, unlabeled, can be labeled with: BLUEMARK ID COLOR, BLUEMARK ID, BLUEMARK CLED, PLOTMARK, CMS-P1-PLOTTER, mounting type: adhesive, Number of individual labels: 10, text field height: 8 mm, text field width: 20 mm



# PTME 6-SET POWER - Starter kit



3035991

<https://www.phoenixcontact.com/sg/products/3035991>

## UC-TM 8 - Marker for terminal blocks

0818072

<https://www.phoenixcontact.com/sg/products/0818072>



Marker for terminal blocks, Sheet, white, unlabeled, can be labeled with: BLUEMARK ID COLOR, BLUEMARK ID, BLUEMARK CLED, PLOTMARK, CMS-P1-PLOTTER, mounting type: latching, for terminal block width: 8.2 mm, Number of individual labels: 56, text field height: 10.5 mm, text field width: 7.6 mm

---

## UC-TMF 8 - Marker for terminal blocks

0818137

<https://www.phoenixcontact.com/sg/products/0818137>



Marker for terminal blocks, Sheet, white, unlabeled, can be labeled with: BLUEMARK ID COLOR, BLUEMARK ID, BLUEMARK CLED, PLOTMARK, CMS-P1-PLOTTER, mounting type: latching, for terminal block width: 8.2 mm, Number of individual labels: 56, text field height: 5.1 mm, text field width: 7.6 mm

# PTME 6-SET POWER - Starter kit



3035991

<https://www.phoenixcontact.com/sg/products/3035991>

## Technical data

### Notes

|         |   |
|---------|---|
| General | Quantity specifications on the set contents under downloads |
|---------|---|

### Product properties

|              |             |
|--------------|-------------|
| Product type | Starter kit |
|--------------|-------------|

### Dimensions

|        |        |
|--------|--------|
| Width  | 225 mm |
| Height | 315 mm |
| Depth  | 65 mm  |

### Environmental and real-life conditions

#### Ambient conditions

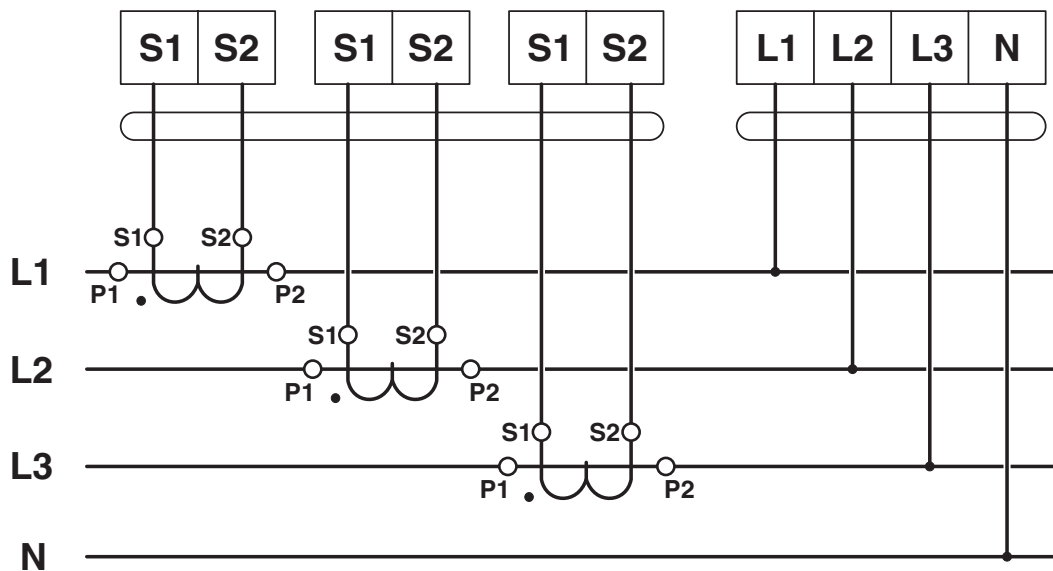
|  |  |
|--|--|
| Ambient temperature (operation)          | -60 °C ... 110 °C (Operating temperature range incl. self-heating; for max. short-term operating temperature, see RTI Elec.) |
| Ambient temperature (storage/transport)  | -25 °C ... 60 °C (for a short time, not exceeding 24 h, -60 °C to +70 °C)  |
| Ambient temperature (assembly)           | -5 °C ... 70 °C  |
| Ambient temperature (actuation)          | -5 °C ... 70 °C  |
| Permissible humidity (operation)         | 20 % ... 90 %  |
| Permissible humidity (storage/transport) | 30 % ... 70 %  |

### Mounting

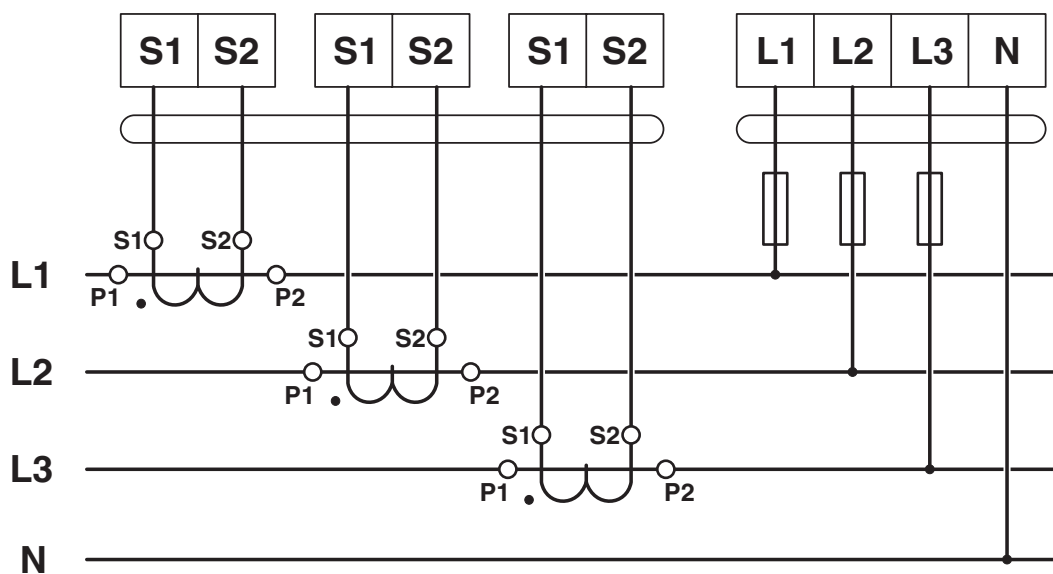
|               |           |
|---------------|-----------|
| Mounting type | NS 35/7,5 |
|               | NS 35/15  |

## Drawings

Circuit diagram



Circuit diagram



# PTME 6-SET POWER - Starter kit



3035991

<https://www.phoenixcontact.com/sg/products/3035991>

## Approvals

🔗 To download certificates, visit the product detail page: <https://www.phoenixcontact.com/sg/products/3035991>



**EAC**

Approval ID: RU C-DE.BL08.B.00644



**EAC**

Approval ID: EACKZ 08593

# PTME 6-SET POWER - Starter kit



3035991

<https://www.phoenixcontact.com/sg/products/3035991>

## Classifications

### ECLASS

|             |          |
|-------------|----------|
| ECLASS-11.0 | 27141126 |
| ECLASS-12.0 | 27141126 |
| ECLASS-13.0 | 27250109 |

### ETIM

|          |          |
|----------|----------|
| ETIM 9.0 | EC000902 |
|----------|----------|

### UNSPSC

|             |          |
|-------------|----------|
| UNSPSC 21.0 | 39121400 |
|-------------|----------|

# PTME 6-SET POWER - Starter kit



3035991

<https://www.phoenixcontact.com/sg/products/3035991>

## Environmental product compliance

### EU RoHS

|   |                    |
|---|--------------------|
| Fulfills EU RoHS substance requirements | Yes, No exemptions |
|---|--------------------|

### China RoHS

|  |  |
|--|--|
| Environment friendly use period (EFUP) | EFUP-E                                   |
|  | No hazardous substances above the limits |

### EU REACH SVHC

|                                     |                            |
|-------------------------------------|----------------------------|
| REACH candidate substance (CAS No.) | No substance above 0.1 wt% |
|-------------------------------------|----------------------------|

Phoenix Contact 2025 © - all rights reserved  
<https://www.phoenixcontact.com>

PHOENIX CONTACT SEA Pte. Ltd.  
105 Eunos Avenue 3, #04-00  
Singapore 409836  
+65 6228 4900  
[marketing@phoenixcontact.com.sg](mailto:marketing@phoenixcontact.com.sg)