

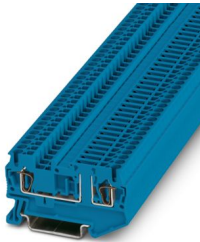
ST 2,5-TG BU - Disconnect terminal block



3035577

<https://www.phoenixcontact.com/sg/products/3035577>

Please be informed that the data shown in this PDF document is generated from our online catalog. Please find the complete data in the user documentation. Our general terms of use for downloads are valid.



Disconnect terminal block, Current and voltage are determined by the plug used., nom. voltage: 400 V, nominal current: 20 A, 1 level, connection method: Spring-cage connection, Rated cross section: 2.5 mm², cross section: 0.08 mm² - 4 mm², mounting: NS 35/7,5, NS 35/15, color: blue

Commercial data

| | |
|--------------------------------------|--------------------------------|
| Item number | 3035577 |
| Packing unit | 50 pc |
| Minimum order quantity | 50 pc |
| Note | Made to order (non-returnable) |
| Sales key | ***** |
| Product key | BE2132 |
| GTIN | 4046356409971 |
| Weight per piece (including packing) | 7.52 g |
| Weight per piece (excluding packing) | 7.52 g |
| Customs tariff number | 85369010 |
| Country of origin | IN |

ST 2,5-TG BU - Disconnect terminal block



3035577

<https://www.phoenixcontact.com/sg/products/3035577>

Technical data

Notes

| | |
|---------|------------------------------------------------------|
| General | Current and voltage are determined by the plug used. |
|---------|------------------------------------------------------|

Product properties

| | |
|-----------------------|---------------------------|
| Product type | Disconnect terminal block |
| Number of connections | 2 |
| Number of rows | 1 |
| Potentials | 1 |

Data management status

| | |
|------------------|----|
| Article revision | 00 |
|------------------|----|

Insulation characteristics

| | |
|----------------------|-----|
| Overvoltage category | III |
| Degree of pollution | 3 |

Electrical properties

| | |
|-------------------------------------------------|--------|
| Rated surge voltage | 6 kV |
| Maximum power dissipation for nominal condition | 0.77 W |

Connection data

| | |
|---------------------------------|---------------------|
| Number of connections per level | 2 |
| Nominal cross section | 2.5 mm ² |

1 level

| | |
|-------------------------------------------------------------------------------------------|-------------------------------------------------------|
| Stripping length | 8 mm ... 10 mm |
| Internal cylindrical gage | A3 |
| Connection in acc. with standard | IEC 60947-7-1 |
| Conductor cross section rigid | 0.08 mm ² ... 4 mm ² |
| Cross section AWG | 28 ... 12 (converted acc. to IEC) |
| Conductor cross section flexible | 0.08 mm ² ... 2.5 mm ² |
| Conductor cross section, flexible [AWG] | 28 ... 14 (converted acc. to IEC) |
| Conductor cross-section flexible (ferrule without plastic sleeve) | 0.14 mm ² ... 2.5 mm ² |
| Flexible conductor cross section (ferrule with plastic sleeve) | 0.14 mm ² ... 2.5 mm ² |
| 2 conductors with the same cross section, flexible, with TWIN ferrule with plastic sleeve | 0.5 mm ² |
| Nominal current | 20 A (current is determined by the plug used) |
| Maximum load current | 20 A (with 4 mm ² conductor cross section) |
| Nominal voltage | 400 V (voltage is determined by the plug used) |
| Nominal cross section | 2.5 mm ² |

Dimensions

| | |
|-------|--------|
| Width | 5.2 mm |
|-------|--------|

ST 2,5-TG BU - Disconnect terminal block



3035577

<https://www.phoenixcontact.com/sg/products/3035577>

| | |
|--------------------|---------|
| End cover width | 2.2 mm |
| Height | 60.5 mm |
| Depth on NS 35/7,5 | 36.5 mm |
| Depth on NS 35/15 | 44 mm |

Material specifications

| | |
|-------------------------------------------------------------------------|-----------------|
| Color | blue (RAL 5015) |
| Flammability rating according to UL 94 | V0 |
| Insulating material group | I |
| Insulating material | PA |
| Static insulating material application in cold | -60 °C |
| Temperature index of insulation material (DIN EN 60216-1 (VDE 0304-21)) | 125 °C |
| Relative insulation material temperature index (Elec., UL 746 B) | 130 °C |
| Fire protection for rail vehicles (DIN EN 45545-2) R22 | HL 1 - HL 3 |
| Fire protection for rail vehicles (DIN EN 45545-2) R23 | HL 1 - HL 3 |
| Fire protection for rail vehicles (DIN EN 45545-2) R24 | HL 1 - HL 3 |
| Fire protection for rail vehicles (DIN EN 45545-2) R26 | HL 1 - HL 3 |
| Calorimetric heat release NFPA 130 (ASTM E 1354) | 27,5 MJ/kg |
| Surface flammability NFPA 130 (ASTM E 162) | passed |
| Specific optical density of smoke NFPA 130 (ASTM E 662) | passed |
| Smoke gas toxicity NFPA 130 (SMP 800C) | passed |

Electrical tests

Surge voltage test

| | |
|-----------------------|-------------|
| Test voltage setpoint | 7.3 kV |
| Result | Test passed |

Temperature-rise test

| | |
|--------------------------------------------------|-------------------------------------|
| Requirement temperature-rise test | Increase in temperature \leq 45 K |
| Result | Test passed |
| Short-time withstand current 2.5 mm ² | 0.3 kA |
| Result | Test passed |

Power-frequency withstand voltage

| | |
|-----------------------|-------------|
| Test voltage setpoint | 1.89 kV |
| Result | Test passed |

Mechanical properties

Mechanical data

| | |
|-----------------|-----|
| Open side panel | Yes |
|-----------------|-----|

Mechanical tests

Mechanical strength

ST 2,5-TG BU - Disconnect terminal block



3035577

<https://www.phoenixcontact.com/sg/products/3035577>

| | |
|--------|-------------|
| Result | Test passed |
|--------|-------------|

Attachment on the carrier

| | |
|-------------------------|-------------|
| DIN rail/fixing support | NS 35 |
| Test force setpoint | 1 N |
| Result | Test passed |

Test for conductor damage and slackening

| | |
|--------------------------------|-------------------------------|
| Rotation speed | 10 rpm |
| Revolutions | 135 |
| Conductor cross section/weight | 0.08 mm ² / 0.1 kg |
| | 2.5 mm ² / 0.7 kg |
| | 4 mm ² / 0.9 kg |
| Result | Test passed |

Environmental and real-life conditions

Aging

| | |
|--------------------|-------------|
| Temperature cycles | 192 |
| Result | Test passed |

Needle-flame test

| | |
|------------------|-------------|
| Time of exposure | 30 s |
| Result | Test passed |

Oscillation/broadband noise

| | |
|------------------------|------------------------------------------------|
| Specification | DIN EN 50155 (VDE 0115-200):2008-03 |
| Spectrum | Service life test category 2, bogie-mounted |
| Frequency | $f_1 = 5 \text{ Hz}$ to $f_2 = 250 \text{ Hz}$ |
| ASD level | 6.12 (m/s ²) ² /Hz |
| Acceleration | 3.12g |
| Test duration per axis | 5 h |
| Test directions | X-, Y- and Z-axis |
| Result | Test passed |

Shocks

| | |
|--------------------------------|-------------------------------------|
| Specification | DIN EN 50155 (VDE 0115-200):2008-03 |
| Pulse shape | Half-sine |
| Acceleration | 30g |
| Shock duration | 18 ms |
| Number of shocks per direction | 3 |
| Test directions | X-, Y- and Z-axis (pos. and neg.) |
| Result | Test passed |

Ambient conditions

| | |
|---------------------------------|------------------------------------------------------------------------------------------------------------------------------|
| Ambient temperature (operation) | -60 °C ... 110 °C (Operating temperature range incl. self-heating; for max. short-term operating temperature, see RTI Elec.) |
|---------------------------------|------------------------------------------------------------------------------------------------------------------------------|

ST 2,5-TG BU - Disconnect terminal block



3035577

<https://www.phoenixcontact.com/sg/products/3035577>

| | |
|------------------------------------------|---------------------------------------------------------------------------|
| Ambient temperature (storage/transport) | -25 °C ... 60 °C (for a short time, not exceeding 24 h, -60 °C to +70 °C) |
| Ambient temperature (assembly) | -5 °C ... 70 °C |
| Ambient temperature (actuation) | -5 °C ... 70 °C |
| Permissible humidity (operation) | 20 % ... 90 % |
| Permissible humidity (storage/transport) | 30 % ... 70 % |

Standards and regulations

| | |
|----------------------------------|---------------|
| Connection in acc. with standard | IEC 60947-7-1 |
|----------------------------------|---------------|

Mounting

| | |
|---------------|-----------|
| Mounting type | NS 35/7,5 |
| | NS 35/15 |

ST 2,5-TG BU - Disconnect terminal block

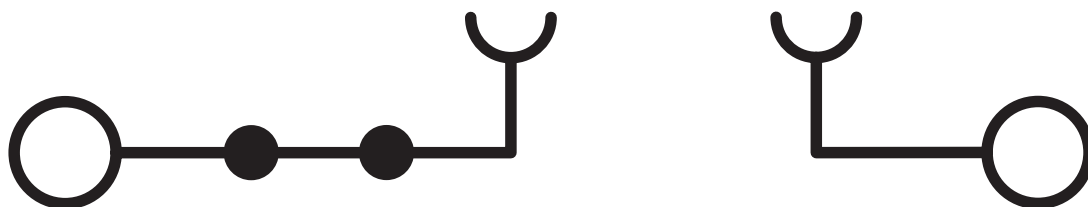
3035577

<https://www.phoenixcontact.com/sg/products/3035577>



Drawings

Circuit diagram



ST 2,5-TG BU - Disconnect terminal block




3035577


<https://www.phoenixcontact.com/sg/products/3035577>

Approvals

To download certificates, visit the product detail page: <https://www.phoenixcontact.com/sg/products/3035577>

|  CSA Approval ID: 13631 | | | | |
|--------------------------------------------------------------------------------------------------------------------|-----------------------|-----------------------|-------------------|----------------------|
| | Nominal voltage U_N | Nominal current I_N | Cross section AWG | Cross section mm^2 |
| Use group B | 300 V | 16 A | 28 - 12 | - |
| Use group C | 150 V | 16 A | 28 - 12 | - |
| Use group D | 300 V | 10 A | 28 - 12 | - |

|  EAC Approval ID: RU C-DE.BL08.B.00644 | | | | |
|-----------------------------------------------------------------------------------------------------------------------------------|--|--|--|--|
|-----------------------------------------------------------------------------------------------------------------------------------|--|--|--|--|

|  cULus Recognized Approval ID: E60425 | | | | |
|------------------------------------------------------------------------------------------------------------------------------------|-----------------------|-----------------------|-------------------|----------------------|
| | Nominal voltage U_N | Nominal current I_N | Cross section AWG | Cross section mm^2 |
| Use group B | 300 V | 16 A | 28 - 12 | - |
| Use group C | 300 V | 16 A | 28 - 12 | - |

ST 2,5-TG BU - Disconnect terminal block



3035577

<https://www.phoenixcontact.com/sg/products/3035577>

Classifications

ECLASS

| | |
|-------------|----------|
| ECLASS-11.0 | 27141126 |
| ECLASS-12.0 | 27141126 |
| ECLASS-13.0 | 27250108 |

ETIM

| | |
|----------|----------|
| ETIM 9.0 | EC000902 |
|----------|----------|

UNSPSC

| | |
|-------------|----------|
| UNSPSC 21.0 | 39121400 |
|-------------|----------|

ST 2,5-TG BU - Disconnect terminal block



3035577

<https://www.phoenixcontact.com/sg/products/3035577>

Environmental product compliance

EU RoHS

| | |
|-----------------------------------------|--------------------|
| Fulfills EU RoHS substance requirements | Yes, No exemptions |
|-----------------------------------------|--------------------|

China RoHS

| | |
|----------------------------------------|------------------------------------------|
| Environment friendly use period (EFUP) | EFUP-E |
| | No hazardous substances above the limits |

EU REACH SVHC

| | |
|-------------------------------------|----------------------------|
| REACH candidate substance (CAS No.) | No substance above 0.1 wt% |
|-------------------------------------|----------------------------|

Phoenix Contact 2024 © - all rights reserved
<https://www.phoenixcontact.com>

PHOENIX CONTACT SEA Pte. Ltd.
105 Eunos Avenue 3, #04-00
Singapore 409836
+65 6228 4900
marketing@phoenixcontact.com.sg