

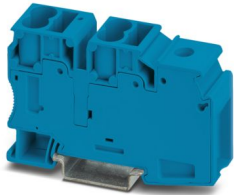
FTU 35/4X10 BU - Potential collective terminal



1089359

<https://www.phoenixcontact.com/sg/products/1089359>

Please be informed that the data shown in this PDF document is generated from our online catalog. Please find the complete data in the user documentation. Our general terms of use for downloads are valid.



Potential collective terminal, In the end application, the applicable safety regulations for overload and short-circuit protection on the connected conductors must be considered., nom. voltage: 1000 V, nominal current: 57 A, Load contact, connection method: Push-in connection, Rated cross section: 10 mm², cross section: 0.5 mm² - 16 mm², Line contact, connection method: Screw connection, Rated cross section: 35 mm², cross section: 1.5 mm² - 50 mm², mounting: NS 35/7,5, NS 35/15, color: blue

Commercial data

Item number	1089359
Packing unit	1 pc
Minimum order quantity	1 pc
Product key	BE2219
GTIN	4055626892092
Country of origin	IN

FTU 35/4X10 BU - Potential collective terminal



1089359

<https://www.phoenixcontact.com/sg/products/1089359>

Technical data

Notes

Notes on operation	In the end application, the applicable safety regulations for overload and short-circuit protection on the connected conductors must be considered.
--------------------	---

Product properties

Product type	Potential distributor
Number of connections	5
Number of rows	1
Potentials	1

Data management status

Article revision	00
------------------	----

Insulation characteristics

Overvoltage category	III
Degree of pollution	2

Electrical properties

Rated surge voltage	8 kV
---------------------	------

Connection data

Number of connections per level	5
---------------------------------	---

Load contact

Stripping length	18 mm ... 20 mm
Connection in acc. with standard	IEC 60947-7-1
Conductor cross section rigid	0.5 mm ² ... 16 mm ²
Cross section AWG	20 ... 6 (converted acc. to IEC)
Conductor cross section flexible	0.5 mm ² ... 10 mm ²
Conductor cross section, flexible [AWG]	20 ... 8 (converted acc. to IEC)
Conductor cross-section flexible (ferrule without plastic sleeve)	0.5 mm ² ... 10 mm ²
Flexible conductor cross section (ferrule with plastic sleeve)	0.5 mm ² ... 10 mm ²
2 conductors with the same cross section, flexible, with TWIN ferrule with plastic sleeve	1.5 mm ² ... 4 mm ²
Nominal current	57 A
Maximum load current	57 A
Nominal voltage	1000 V
Nominal cross section	10 mm ²

Line contact

Screw thread	M6
Tightening torque	3.2 ... 3.7 Nm
Stripping length	18 mm ... 20 mm

FTU 35/4X10 BU - Potential collective terminal



1089359

<https://www.phoenixcontact.com/sg/products/1089359>

Internal cylindrical gage	B9
Connection in acc. with standard	IEC 60947-7-1
Conductor cross section rigid	1.5 mm ² ... 50 mm ²
Cross section AWG	14 ... 2 (converted acc. to IEC)
Conductor cross section flexible	1.5 mm ² ... 35 mm ²
Conductor cross section, flexible [AWG]	14 ... 2 (converted acc. to IEC)
Conductor cross-section flexible (ferrule without plastic sleeve)	1.5 mm ² ... 35 mm ²
Flexible conductor cross section (ferrule with plastic sleeve)	1.5 mm ² ... 35 mm ²
2 conductors with same cross section, solid	1.5 mm ² ... 16 mm ²
2 conductors with the same cross-section AWG rigid	16 ... 6 (converted acc. to IEC)
2 conductors with same cross section, flexible	1.5 mm ² ... 10 mm ²
2 conductors with the same cross-section AWG flexible	16 ... 8 (converted acc. to IEC)
2 conductors with the same cross section, flexible, with TWIN ferrule with plastic sleeve	1.5 mm ² ... 10 mm ²
Nominal current	101 A
Maximum load current	101 A (The maximum load current must not be exceeded by the total current of all connected conductors.)
Nominal voltage	1000 V
Nominal cross section	35 mm ²

Load contact Connection cross sections directly pluggable

Conductor cross section rigid	1 mm ² ... 16 mm ²
Conductor cross-section flexible (ferrule without plastic sleeve)	4 mm ² ... 10 mm ²
Flexible conductor cross section (ferrule with plastic sleeve)	2.5 mm ² ... 10 mm ²

Dimensions

Width	19.4 mm
-------	---------

Material specifications

Color	blue
Flammability rating according to UL 94	V0
Insulating material group	I
Insulating material	PA

Mechanical properties

Mechanical data

Open side panel	No
-----------------	----

Environmental and real-life conditions

Ambient conditions

Ambient temperature (storage/transport)	-25 °C ... 60 °C (for a short time, not exceeding 24 h, -60 °C to +70 °C)
Ambient temperature (assembly)	-5 °C ... 70 °C
Ambient temperature (actuation)	-5 °C ... 70 °C
Permissible humidity (storage/transport)	30 % ... 70 %

FTU 35/4X10 BU - Potential collective terminal



1089359

<https://www.phoenixcontact.com/sg/products/1089359>

Standards and regulations

Connection in acc. with standard	IEC 60947-7-1
	IEC 60947-7-1

Mounting

Mounting type	NS 35/7,5
	NS 35/15

FTU 35/4X10 BU - Potential collective terminal



1089359

<https://www.phoenixcontact.com/sg/products/1089359>

Drawings

Circuit diagram



FTU 35/4X10 BU - Potential collective terminal



1089359

<https://www.phoenixcontact.com/sg/products/1089359>

Approvals

To download certificates, visit the product detail page: <https://www.phoenixcontact.com/sg/products/1089359>



cULus Recognized
Approval ID: E60425



cULus Recognized
Approval ID: E60425



cULus Recognized
Approval ID: E60425

FTU 35/4X10 BU - Potential collective terminal



1089359

<https://www.phoenixcontact.com/sg/products/1089359>

Classifications

ECLASS

ECLASS-11.0	27141120
ECLASS-13.0	27250119

ETIM

ETIM 9.0	EC000897
----------	----------

UNSPSC

UNSPSC 21.0	39121410
-------------	----------

FTU 35/4X10 BU - Potential collective terminal



1089359

<https://www.phoenixcontact.com/sg/products/1089359>

Environmental product compliance

EU RoHS

Fulfills EU RoHS substance requirements	Yes, No exemptions
---	--------------------

China RoHS

Environment friendly use period (EFUP)	EFUP-E
	No hazardous substances above the limits

EU REACH SVHC

REACH candidate substance (CAS No.)	No substance above 0.1 wt%
-------------------------------------	----------------------------

Phoenix Contact 2024 © - all rights reserved
<https://www.phoenixcontact.com>

PHOENIX CONTACT SEA Pte. Ltd.
105 Eunos Avenue 3, #04-00
Singapore 409836
+65 6228 4900
marketing@phoenixcontact.com.sg