

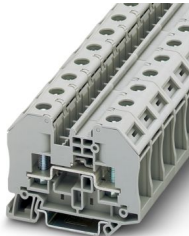
RT 5 - Bolt connection terminal block



3049026

<https://www.phoenixcontact.com/sg/products/3049026>

Please be informed that the data shown in this PDF document is generated from our online catalog. Please find the complete data in the user documentation. Our general terms of use for downloads are valid.



Bolt connection terminal block, nom. voltage: 1000 V, nominal current: 41 A, number of connections: 2, connection method: Bolt connection, Rated cross section: 6 mm², mounting type: NS 35/7,5, NS 35/15, color: gray

Your advantages

- The special clamping nuts can be actuated with a normal screwdriver
- Large-surface labeling options in the terminal center and above the terminal points
- Quick and easy connection with fold-up hinged covers which hold the clamping nuts captive. With the covers folded open, the bolt is free to accept the cable lugs
- After closing and engaging the covers, the clamping nut automatically aligns with the threaded bolt and can be tightened easily.
- Easy bridging and potential distribution using the patented plug-in bridges from the CLIPLINE complete system
- The screws are secured against loosening by captive spring-loaded spacers
- The use of the switching lock effectively prevents unintentional switching
- Testing with the standardized test adapters and test plugs of the CLIPLINE complete system
- The hinged cover cover the live metal parts including the insulated cable lugs in the clamping area so that they are touch proof
- Tested for railway applications

Commercial data

Item number	3049026
Packing unit	50 pc
Minimum order quantity	50 pc
Sales key	0180*
Product key	BE4313
Catalog page	Page 381 (C-1-2019)
GTIN	4046356140799
Weight per piece (including packing)	39.334 g
Weight per piece (excluding packing)	39.334 g
Customs tariff number	85369010
Country of origin	CN

RT 5 - Bolt connection terminal block



3049026

<https://www.phoenixcontact.com/sg/products/3049026>

Technical data

Notes

General	Note: the BE-RT... path extension is to be used for non-insulated cable lugs (see accessories).
---------	---

General

Note	The rated insulation voltage applies to insulated cable lugs acc. to DIN 46237:1970-07 with or without path extension and for uninsulated cable lugs acc. to DIN 46234:1980-03 with path extension.
------	---

Product properties

Product type	Bolt connection terminal block
Product family	RT
Area of application	Railway industry
	Machine building
	Plant engineering
	Process industry
Number of connections	2
Number of rows	1
Potentials	1

Insulation characteristics

Overvoltage category	III
Degree of pollution	3

Electrical properties

Rated surge voltage	8 kV
Maximum power dissipation for nominal condition	1.31 W

Connection data

Number of connections per level	2
Nominal cross section	6 mm ²

Level 1 above 1 below 1

Stripping length	The stripping length depends on the specification provided by the cable lug manufacturer.
Connection in acc. with standard	IEC 60947-7-1
Nominal current	41 A
Maximum load current	41 A (with 6 mm ² conductor cross section)
Nominal voltage	1000 V
Nominal cross section	6 mm ²

Cable lug connection DIN 46234:1980-03

Connection in acc. with standard	DIN 46234:1980-03
Cross section	0.5 mm ² ... 6 mm ²

RT 5 - Bolt connection terminal block



3049026

<https://www.phoenixcontact.com/sg/products/3049026>

Cross section range AWG	20 ... 10 (converted acc. to IEC)
Hole diameter	5.3 mm
Width	10 mm
Bolt diameter	5 mm
Screw thread	M5
Tightening torque	2.5 ... 3 Nm
Connection in acc. with standard	DIN 46237:1970-07
Cross section	1 mm² ... 6 mm²
Cross section range AWG	18 ... 10 (converted acc. to IEC)
Hole diameter	5.3 mm
Width	10 mm
Bolt diameter	5 mm
Screw thread	M5
Tightening torque	2.5 ... 3 Nm
Identification color of ring cable lugs : red	1 mm²
Identification color of ring cable lugs : blue	2.5 mm²
Identification color of ring cable lugs : yellow	6 mm²
Connection in acc. with standard	DIN 46235:1983-07
Cross section	6 mm² ... 10 mm²
Cross section range AWG	10 ... 8 (converted acc. to IEC)
Hole diameter	5.3 mm
Width	9 mm
Bolt diameter	5 mm
Screw thread	M5
Tightening torque	2.5 ... 3 Nm

Ex data

Rated data (ATEX/IECEx)

Identification	Ex II 2 G Ex eb IIC Gb
Operating temperature range	-60 °C ... 110 °C
Ex-certified accessories	3049097 D-RT 3/5
	0706647 TPNS-UK
	3049819 BE-RT 3/5
	1205079 SZS 1,0X6,5 VDE
	1212553 SF-SL 1,2X6,5-150
	3022276 CLIPFIX 35-5
List of bridges	Plug-in bridge / FBS 2-8 / 3030284
	Plug-in bridge / FBS 3-8 / 3030297
	Plug-in bridge / FBS 4-8 / 3030307
	Plug-in bridge / FBS 5-8 / 3030310
	Plug-in bridge / FBS 6-8 / 3032470
	Plug-in bridge / FBS 10-8 / 3030323
Bridge data	41 A / 6 mm²

RT 5 - Bolt connection terminal block



3049026

<https://www.phoenixcontact.com/sg/products/3049026>

Ex temperature increase	40 K (41 A at 6 mm²)
Rated voltage	550 V
for bridging with bridge	550 V
- At bridging between non-adjacent terminal blocks	220 V
- At cut-to-length bridging with cover	220 V
- At cut-to-length bridging with partition plate	550 V
Rated insulation voltage	500 V
output	(Permanent)

Ex level General

Rated current	41 A
Maximum load current	41 A
Contact resistance	0.41 mΩ

Ex connection data General

Torque range	2.5 Nm ... 3 Nm
Nominal cross section	6 mm²
Rated cross section AWG	10
Connection capacity rigid	0.1 mm² ... 6 mm²
Connection capacity AWG	26 ... 10
Connection capacity flexible	0.1 mm² ... 6 mm²
Connection capacity AWG	26 ... 10

Dimensions

Width	16.3 mm
End cover width	2.2 mm
Height	66 mm
Depth on NS 35/7,5	51 mm
Depth on NS 35/15	58.5 mm

Material specifications

Color	gray (RAL 7042)
Flammability rating according to UL 94	V0
Insulating material group	I
Insulating material	PA
Static insulating material application in cold	-60 °C
Temperature index of insulation material (DIN EN 60216-1 (VDE 0304-21))	125 °C
Relative insulation material temperature index (Elec., UL 746 B)	130 °C
Fire protection for rail vehicles (DIN EN 45545-2) R22	HL 1 - HL 3
Fire protection for rail vehicles (DIN EN 45545-2) R23	HL 1 - HL 3
Fire protection for rail vehicles (DIN EN 45545-2) R24	HL 1 - HL 3
Fire protection for rail vehicles (DIN EN 45545-2) R26	HL 1 - HL 3
Calorimetric heat release NFPA 130 (ASTM E 1354)	27,5 MJ/kg
Surface flammability NFPA 130 (ASTM E 162)	passed

RT 5 - Bolt connection terminal block



3049026

<https://www.phoenixcontact.com/sg/products/3049026>

Specific optical density of smoke NFPA 130 (ASTM E 662)	passed
Smoke gas toxicity NFPA 130 (SMP 800C)	passed

Electrical tests

Surge voltage test

Test voltage setpoint	9.8 kV
Result	Test passed

Temperature-rise test

Requirement temperature-rise test	Increase in temperature ≤ 45 K
Result	Test passed
Short-time withstand current 6 mm ²	0.72 kA
Result	Test passed

Power-frequency withstand voltage

Test voltage setpoint	2.2 kV
Result	Test passed

Mechanical properties

Mechanical data

Open side panel	Yes
-----------------	-----

Mechanical tests

Mechanical strength

Result	Test passed
--------	-------------

Attachment on the carrier

DIN rail/fixing support	NS 35
Result	Test passed

Environmental and real-life conditions

Needle-flame test

Time of exposure	30 s
Result	Test passed

Oscillation/broadband noise

Specification	DIN EN 50155 (VDE 0115-200):2008-03
Spectrum	Service life test category 1, class B, body mounted
Frequency	$f_1 = 5$ Hz to $f_2 = 150$ Hz
ASD level	1.857 (m/s ²) ² /Hz
Acceleration	0.8g
Test duration per axis	5 h
Test directions	X-, Y- and Z-axis
Result	Test passed

RT 5 - Bolt connection terminal block



3049026

<https://www.phoenixcontact.com/sg/products/3049026>

Shocks

Specification	DIN EN 50155 (VDE 0115-200):2008-03
Pulse shape	Half-sine
Acceleration	5g
Shock duration	30 ms
Number of shocks per direction	3
Test directions	X-, Y- and Z-axis (pos. and neg.)
Result	Test passed

Ambient conditions

Ambient temperature (operation)	-60 °C ... 110 °C (Operating temperature range incl. self-heating; for max. short-term operating temperature, see RTI Elec.)
Ambient temperature (storage/transport)	-25 °C ... 60 °C (for a short time, not exceeding 24 h, -60 °C to +70 °C)
Ambient temperature (assembly)	-5 °C ... 70 °C
Ambient temperature (actuation)	-5 °C ... 70 °C
Permissible humidity (operation)	20 % ... 90 %
Permissible humidity (storage/transport)	30 % ... 70 %

Standards and regulations

Connection in acc. with standard	IEC 60947-7-1
----------------------------------	---------------

Mounting

Mounting type	NS 35/7,5
	NS 35/15

RT 5 - Bolt connection terminal block

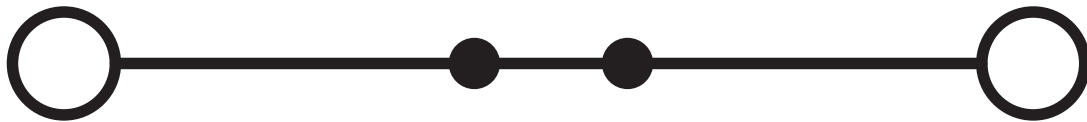
3049026

<https://www.phoenixcontact.com/sg/products/3049026>



Drawings

Circuit diagram



RT 5 - Bolt connection terminal block



3049026

<https://www.phoenixcontact.com/sg/products/3049026>

Approvals

To download certificates, visit the product detail page: <https://www.phoenixcontact.com/sg/products/3049026>



IECEE CB Scheme

Approval ID: DE1-62814



VDE approval of drawings

Approval ID: 40022553

	Nominal voltage U_N	Nominal current I_N	Cross section AWG	Cross section mm^2
	1000 V	41 A	-	0.14 - 6



cULus Recognized

Approval ID: E60425

	Nominal voltage U_N	Nominal current I_N	Cross section AWG	Cross section mm^2
Use group B				
	600 V	30 A	-	-
Use group C				
	600 V	30 A	-	-



EAC Ex

Approval ID: KZ 7500525010101950



IECEx

Approval ID: IECExPTB08.0063U

	Nominal voltage U_N	Nominal current I_N	Cross section AWG	Cross section mm^2
	550 V	41 A	-	0.1 - 6



ATEX

Approval ID: PTB09ATEX1003U

	Nominal voltage U_N	Nominal current I_N	Cross section AWG	Cross section mm^2
	550 V	41 A	-	0.1 - 6



CCC

Approval ID: 2020322313000627



UKCA-EX

Approval ID: CSAE 22UKEX1085U

RT 5 - Bolt connection terminal block



3049026

<https://www.phoenixcontact.com/sg/products/3049026>

Classifications

ECLASS

ECLASS-11.0	27141120
ECLASS-13.0	27250101

ETIM

ETIM 9.0	EC000897
----------	----------

UNSPSC

UNSPSC 21.0	39121400
-------------	----------

RT 5 - Bolt connection terminal block



3049026

<https://www.phoenixcontact.com/sg/products/3049026>

Environmental product compliance

EU RoHS	
Fulfills EU RoHS substance requirements	Yes, No exemptions
China RoHS	
Environment friendly use period (EFUP)	EFUP-E
	No hazardous substances above the limits
EU REACH SVHC	
REACH candidate substance (CAS No.)	No substance above 0.1 wt%

Phoenix Contact 2025 © - all rights reserved
<https://www.phoenixcontact.com>

PHOENIX CONTACT SEA Pte. Ltd.
105 Eunos Avenue 3, #04-00
Singapore 409836
+65 6228 4900
marketing@phoenixcontact.com.sg