

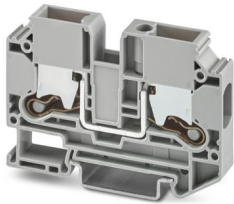
# XTV 10 - Feed-through terminal block



1329547

<https://www.phoenixcontact.com/sg/products/1329547>

Please be informed that the data shown in this PDF document is generated from our online catalog. Please find the complete data in the user documentation. Our general terms of use for downloads are valid.



Feed-through terminal block, nom. voltage: 1000 V, nominal current: 57 A, number of connections: 2, number of positions: 1, connection method: Push-X-connection, Rated cross section: 10 mm<sup>2</sup>, cross section: 1.5 mm<sup>2</sup> - 16 mm<sup>2</sup>, mounting type: NS 35/7,5, NS 35/15, color: gray

## Your advantages

- Fast, powerless conductor connection for all conductor types with the pretensioned contact spring
- A high level of flexibility when inserting conductors enables conductors with or without ferrules to be connected easily
- Clear conductor connection with the lateral connection direction and the clear pusher position
- Easy procurement of information – the QR code on the terminal block provides all important information about the product
- Terminal blocks with Push-X connection are part of the COMPLETE line system

## Commercial data

|                                      |                                |
|--------------------------------------|--------------------------------|
| Item number                          | 1329547                        |
| Packing unit                         | 50 pc                          |
| Minimum order quantity               | 50 pc                          |
| Note                                 | Made to order (non-returnable) |
| Sales key                            | *****                          |
| Product key                          | BE2511                         |
| GTIN                                 | 4063151622084                  |
| Weight per piece (including packing) | 30.44 g                        |
| Weight per piece (excluding packing) | 30.44 g                        |
| Customs tariff number                | 85369010                       |
| Country of origin                    | CN                             |

# XTV 10 - Feed-through terminal block



1329547

<https://www.phoenixcontact.com/sg/products/1329547>

## Technical data

### Product properties

|                       |                             |
|-----------------------|-----------------------------|
| Product type          | Feed-through terminal block |
| Area of application   | Railway industry            |
|                       | Machine building            |
|                       | Plant engineering           |
| Number of positions   | 1                           |
| Number of connections | 2                           |
| Number of rows        | 1                           |
| Potentials            | 1                           |

### Insulation characteristics

|                      |     |
|----------------------|-----|
| Overvoltage category | III |
| Degree of pollution  | 3   |

### Electrical properties

|   |        |
|---|--------|
| Maximum power dissipation for nominal condition | 1.82 W |
| Test surge voltage                              | 8 kV   |

### Connection data

|   |   |
|---|---|
| Number of connections per level   | 2   |
| Nominal cross section   | 10 mm <sup>2</sup>  |
| Stripping length  | 16 mm ... 18 mm   |
| Internal cylindrical gage   | A6  |
|   | B5  |
| Connection in acc. with standard  | IEC 60947-7-1   |
| Conductor cross section rigid   | 1.5 mm <sup>2</sup> ... 16 mm <sup>2</sup>                      |
| Cross section AWG   | 14 ... 6 (converted acc. to IEC)                                |
| Conductor cross section flexible  | 2.5 mm <sup>2</sup> ... 16 mm <sup>2</sup>                      |
| Conductor cross section, flexible [AWG]   | 12 ... 6 (converted acc. to IEC)                                |
| Conductor cross-section flexible (ferrule without plastic sleeve)                         | 2.5 mm <sup>2</sup> ... 10 mm <sup>2</sup>                      |
| Flexible conductor cross section (ferrule with plastic sleeve)                            | 2.5 mm <sup>2</sup> ... 10 mm <sup>2</sup>                      |
| 2 conductors with the same cross section, flexible, with TWIN ferrule with plastic sleeve | 1.5 mm <sup>2</sup> ... 6 mm <sup>2</sup>                       |
| Nominal current   | 57 A  |
| Maximum load current  | 70 A (with a 16 mm <sup>2</sup> conductor cross section, rigid) |
| Nominal voltage   | 1000 V  |
| Nominal cross section   | 10 mm <sup>2</sup>  |

### Dimensions

|                 |         |
|-----------------|---------|
| Width           | 10.2 mm |
| End cover width | 2.2 mm  |
| Height          | 72 mm   |

# XTV 10 - Feed-through terminal block



1329547

<https://www.phoenixcontact.com/sg/products/1329547>

|                    |         |
|--------------------|---------|
| Depth              | 48.8 mm |
| Depth on NS 35/7,5 | 50.3 mm |
| Depth on NS 35/15  | 57.8 mm |

## Material specifications

|  |                 |
|--|-----------------|
| Color  | gray (RAL 7042) |
| Flammability rating according to UL 94                           | V0              |
| Insulating material group  | I               |
| Insulating material  | PA              |
| Static insulating material application in cold                   | -60 °C          |
| Relative insulation material temperature index (Elec., UL 746 B) | 130 °C          |
| Fire protection for rail vehicles (DIN EN 45545-2) R22           | HL 1 - HL 3     |
| Fire protection for rail vehicles (DIN EN 45545-2) R23           | HL 1 - HL 3     |
| Fire protection for rail vehicles (DIN EN 45545-2) R24           | HL 1 - HL 3     |
| Fire protection for rail vehicles (DIN EN 45545-2) R26           | HL 1 - HL 3     |
| Surface flammability NFPA 130 (ASTM E 162)                       | passed          |
| Specific optical density of smoke NFPA 130 (ASTM E 662)          | passed          |
| Smoke gas toxicity NFPA 130 (SMP 800C)                           | passed          |

## Electrical tests

### Surge voltage test

|        |             |
|--------|-------------|
| Result | Test passed |
|--------|-------------|

### Temperature-rise test

|   |                                     |
|---|-------------------------------------|
| Requirement temperature-rise test               | Increase in temperature $\leq 45$ K |
| Result  | Test passed                         |
| Short-time withstand current 10 mm <sup>2</sup> | 1.2 kA                              |
| Result  | Test passed                         |

### Power-frequency withstand voltage

|                       |             |
|-----------------------|-------------|
| Test voltage setpoint | 2.2 kV      |
| Result                | Test passed |

## Mechanical properties

### Mechanical data

|                 |     |
|-----------------|-----|
| Open side panel | Yes |
|-----------------|-----|

## Mechanical tests

### Mechanical strength

|        |             |
|--------|-------------|
| Result | Test passed |
|--------|-------------|

### Attachment on the carrier

|                         |             |
|-------------------------|-------------|
| DIN rail/fixing support | NS 35       |
| Result                  | Test passed |

# XTV 10 - Feed-through terminal block



1329547

<https://www.phoenixcontact.com/sg/products/1329547>

## Test for conductor damage and slackening

|                                |                              |
|--------------------------------|------------------------------|
| Rotation speed                 | 9 rpm                        |
| Revolutions                    | 135                          |
| Conductor cross section/weight | 1.5 mm <sup>2</sup> / 0.4 kg |
|                                | 10 mm <sup>2</sup> / 2 kg    |
|                                | 16 mm <sup>2</sup> / 2.9 kg  |
| Result                         | Test passed                  |

## Environmental and real-life conditions

### Aging

|                    |             |
|--------------------|-------------|
| Temperature cycles | 192         |
| Result             | Test passed |

### Needle-flame test

|                  |             |
|------------------|-------------|
| Time of exposure | 30 s        |
| Result           | Test passed |

### Oscillation/broadband noise

|                        |  |
|------------------------|--|
| Specification          | DIN EN 50155 (VDE 0115-200):2018-05            |
| Spectrum               | Service life test category 2, bogie-mounted    |
| Frequency              | $f_1 = 5 \text{ Hz}$ to $f_2 = 250 \text{ Hz}$ |
| ASD level              | 6.12 (m/s <sup>2</sup> ) <sup>2</sup> /Hz      |
| Acceleration           | 3.12g  |
| Test duration per axis | 5 h  |
| Test directions        | X-, Y- and Z-axis                              |
| Result                 | Test passed                                    |

### Shocks

|                                |                                     |
|--------------------------------|-------------------------------------|
| Specification                  | DIN EN 50155 (VDE 0115-200):2018-05 |
| Pulse shape                    | Half-sine                           |
| Acceleration                   | 30g                                 |
| Shock duration                 | 18 ms                               |
| Number of shocks per direction | 3                                   |
| Test directions                | X-, Y- and Z-axis (pos. and neg.)   |
| Result                         | Test passed                         |

### Ambient conditions

|  |  |
|--|--|
| Ambient temperature (operation)          | -60 °C ... 110 °C (Operating temperature range incl. self-heating; for max. short-term operating temperature, see RTI Elec.) |
| Ambient temperature (storage/transport)  | -25 °C ... 60 °C (for a short time, not exceeding 24 h, -60 °C to +70 °C)  |
| Ambient temperature (assembly)           | -5 °C ... 70 °C  |
| Ambient temperature (actuation)          | -5 °C ... 70 °C  |
| Permissible humidity (operation)         | 20 % ... 90 %  |
| Permissible humidity (storage/transport) | 30 % ... 70 %  |

# XTV 10 - Feed-through terminal block



1329547

<https://www.phoenixcontact.com/sg/products/1329547>

## Standards and regulations

|                                  |               |
|----------------------------------|---------------|
| Connection in acc. with standard | IEC 60947-7-1 |
|----------------------------------|---------------|

## Mounting

|               |           |
|---------------|-----------|
| Mounting type | NS 35/7,5 |
|               | NS 35/15  |

# XTV 10 - Feed-through terminal block

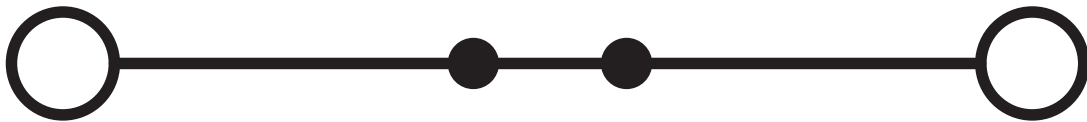


1329547

<https://www.phoenixcontact.com/sg/products/1329547>

## Drawings

Circuit diagram



# XTV 10 - Feed-through terminal block





1329547

<https://www.phoenixcontact.com/sg/products/1329547>

## Approvals

To download certificates, visit the product detail page: <https://www.phoenixcontact.com/sg/products/1329547>

|  <b>cULus Recognized</b><br>Approval ID: E60425 |                       |                       |                   |                             |
|--|-----------------------|-----------------------|-------------------|-----------------------------|
|  | Nominal voltage $U_N$ | Nominal current $I_N$ | Cross section AWG | Cross section $\text{mm}^2$ |
| Use group B  |                       |                       |                   |                             |
|  | 600 V                 | 55 A                  | 12 - 6            | -                           |
| Use group C  |                       |                       |                   |                             |
|  | 600 V                 | 55 A                  | 12 - 6            | -                           |
| Use group F  |                       |                       |                   |                             |
|  | 1000 V                | 55 A                  | 12 - 6            | -                           |

|  <b>CSA</b><br>Approval ID: 2030668 |                       |                       |                   |                             |
|--|-----------------------|-----------------------|-------------------|-----------------------------|
|  | Nominal voltage $U_N$ | Nominal current $I_N$ | Cross section AWG | Cross section $\text{mm}^2$ |
| Use group B  |                       |                       |                   |                             |
|  | 600 V                 | 55 A                  | 12 - 6            | -                           |
| Use group C  |                       |                       |                   |                             |
|  | 600 V                 | 55 A                  | 12 - 6            | -                           |

# XTV 10 - Feed-through terminal block



1329547

<https://www.phoenixcontact.com/sg/products/1329547>

## Classifications

### ECLASS

|             |          |
|-------------|----------|
| ECLASS-11.0 | 27141120 |
| ECLASS-13.0 | 27250101 |

### ETIM

|          |          |
|----------|----------|
| ETIM 9.0 | EC000897 |
|----------|----------|

### UNSPSC

|             |          |
|-------------|----------|
| UNSPSC 21.0 | 39121400 |
|-------------|----------|



# XTV 10 - Feed-through terminal block



1329547

<https://www.phoenixcontact.com/sg/products/1329547>

## Environmental product compliance

### EU RoHS

|   |                    |
|---|--------------------|
| Fulfills EU RoHS substance requirements | Yes, No exemptions |
|---|--------------------|

### China RoHS

|  |  |
|--|--|
| Environment friendly use period (EFUP) | EFUP-E                                   |
|  | No hazardous substances above the limits |

### EU REACH SVHC

|                                     |                            |
|-------------------------------------|----------------------------|
| REACH candidate substance (CAS No.) | No substance above 0.1 wt% |
|-------------------------------------|----------------------------|

Phoenix Contact 2025 © - all rights reserved

<https://www.phoenixcontact.com>

PHOENIX CONTACT SEA Pte. Ltd.

105 Eunos Avenue 3, #04-00

Singapore 409836

+65 6228 4900

[marketing@phoenixcontact.com.sg](mailto:marketing@phoenixcontact.com.sg)