

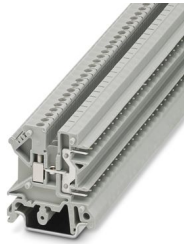
UK 3-MSTB-5,08 - Feed-through terminal block



3002034

<https://www.phoenixcontact.com/sg/products/3002034>

Please be informed that the data shown in this PDF document is generated from our online catalog. Please find the complete data in the user documentation. Our general terms of use for downloads are valid.



Feed-through terminal block, nom. voltage: 250 V, nominal current: 12 A, number of connections: 3, number of positions: 1, connection method: Screw/plug-in connection, 2nd level connection left, cross section: 0.2 mm² - 4 mm², mounting type: NS 32, NS 35/15, NS 35/7,5, color: gray

Commercial data

| | |
|--------------------------------------|--------------------|
| Item number | 3002034 |
| Packing unit | 50 pc |
| Minimum order quantity | 50 pc |
| Sales key | 0100* |
| Product key | BE1241 |
| Catalog page | Page 322 (CL-2005) |
| GTIN | 4017918090050 |
| Weight per piece (including packing) | 6.985 g |
| Weight per piece (excluding packing) | 6.985 g |
| Customs tariff number | 85369010 |
| Country of origin | TR |

Technical data

Notes

| | |
|---------|--|
| General | Current and voltage are determined by the plug used. |
|---------|--|

Product properties

| | |
|-----------------------|-----------------------------|
| Product type | Feed-through terminal block |
| Product family | UK 3-MSTB |
| Number of positions | 1 |
| Pitch | 5.08 mm |
| Number of connections | 3 |
| Number of rows | 2 |
| Potentials | 1 |

Insulation characteristics

| | |
|----------------------|-----|
| Overvoltage category | III |
| Degree of pollution | 3 |

Electrical properties

| | |
|---|--------|
| Rated surge voltage | 4 kV |
| Maximum power dissipation for nominal condition | 0.77 W |

Connection data

| | |
|---------------------------------|---------------------|
| Number of connections per level | 3 |
| Nominal cross section | 2.5 mm ² |
| Rated cross section AWG | 12 |

2nd level connection left

| | |
|---|--|
| Screw thread | M3 |
| Tightening torque | 0.5 ... 0.6 Nm |
| Stripping length | 8 mm |
| Internal cylindrical gage | A3 |
| Conductor cross section rigid | 0.2 mm ² ... 4 mm ² |
| Cross section AWG | 24 ... 12 (converted acc. to IEC) |
| Conductor cross section flexible | 0.2 mm ² ... 2.5 mm ² |
| Conductor cross section, flexible [AWG] | 24 ... 14 (converted acc. to IEC) |
| Conductor cross-section flexible (ferrule without plastic sleeve) | 0.25 mm ² ... 2.5 mm ² |
| Flexible conductor cross section (ferrule with plastic sleeve) | 0.25 mm ² ... 1.5 mm ² |
| 2 conductors with same cross section, solid | 0.2 mm ² ... 1.5 mm ² |
| 2 conductors with same cross section, flexible | 0.2 mm ² ... 1 mm ² |
| 2 conductors with same cross section, flexible, with ferrule without plastic sleeve | 0.25 mm ² ... 0.5 mm ² |
| 2 conductors with the same cross section, flexible, with TWIN ferrule with plastic sleeve | 0.5 mm ² ... 1 mm ² |
| Nominal current | 12 A |

UK 3-MSTB-5,08 - Feed-through terminal block

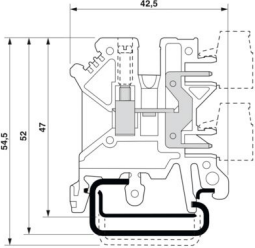


3002034

<https://www.phoenixcontact.com/sg/products/3002034>

| | |
|----------------------|---|
| Maximum load current | 12 A (with 4 mm ² conductor cross section) |
| Nominal voltage | 250 V |

Dimensions

| | |
|---------------------|--|
| Dimensional drawing |  |
| Width | 5.08 mm |
| End cover width | 2.5 mm |
| Height | 42.5 mm |
| Depth on NS 32 | 52 mm |
| Depth on NS 35/7,5 | 47 mm |
| Depth on NS 35/15 | 54.5 mm |
| Pitch | 5.08 mm |

Material specifications

| | |
|---|-----------------|
| Color | gray (RAL 7042) |
| Flammability rating according to UL 94 | V2 |
| Insulating material group | I |
| Insulating material | PA |
| Contact surface | Tin Sn |
| Temperature index of insulation material (DIN EN 60216-1 (VDE 0304-21)) | 125 °C |
| Relative insulation material temperature index (Elec., UL 746 B) | 125 °C |

Electrical tests

Surge voltage test

| | |
|--|-------------|
| Result | Test passed |
| Short-time withstand current 1 mm ² | 0.12 kA |
| Result | Test passed |

Power-frequency withstand voltage

| | |
|-----------------------|-------------|
| Test voltage setpoint | 1.5 kV |
| Result | Test passed |

Mechanical properties

Mechanical data

| | |
|-----------------|-----|
| Open side panel | Yes |
|-----------------|-----|

Mechanical tests

Attachment on the carrier

| | |
|-------------------------|-------------|
| DIN rail/fixing support | NS 32/NS 35 |
| Result | Test passed |

Environmental and real-life conditions

Needle-flame test

| | |
|------------------|-------------|
| Time of exposure | 30 s |
| Result | Test passed |

Oscillation/broadband noise

| | |
|------------------------|--|
| Specification | DIN EN 50155 (VDE 0115-200):2018-05 |
| Spectrum | Service life test category 2, bogie-mounted |
| Frequency | $f_1 = 5 \text{ Hz}$ to $f_2 = 150 \text{ Hz}$ |
| ASD level | $0.964 \text{ (m/s}^2\text{)}^2\text{/Hz}$ |
| Acceleration | 0.58g |
| Test duration per axis | 5 h |
| Test directions | X-, Y- and Z-axis |
| Result | Test passed |

Shocks

| | |
|--------------------------------|-------------------------------------|
| Specification | DIN EN 50155 (VDE 0115-200):2018-05 |
| Pulse shape | Half-sine |
| Acceleration | 5g |
| Shock duration | 30 ms |
| Number of shocks per direction | 3 |
| Test directions | X-, Y- and Z-axis (pos. and neg.) |
| Result | Test passed |

Ambient conditions

| | |
|--|---|
| Ambient temperature (operation) | -60 °C (max. operating temperature see derating curve) |
| Ambient temperature (storage/transport) | -25 °C ... 60 °C (for a short time, not exceeding 24 h, -60 °C to +70 °C) |
| Ambient temperature (assembly) | -5 °C ... 70 °C |
| Ambient temperature (actuation) | -5 °C ... 70 °C |
| Permissible humidity (operation) | 20 % ... 90 % |
| Permissible humidity (storage/transport) | 30 % ... 70 % |

Mounting

| | |
|---------------|-----------|
| Mounting type | NS 32 |
| | NS 35/15 |
| | NS 35/7,5 |

UK 3-MSTB-5,08 - Feed-through terminal block

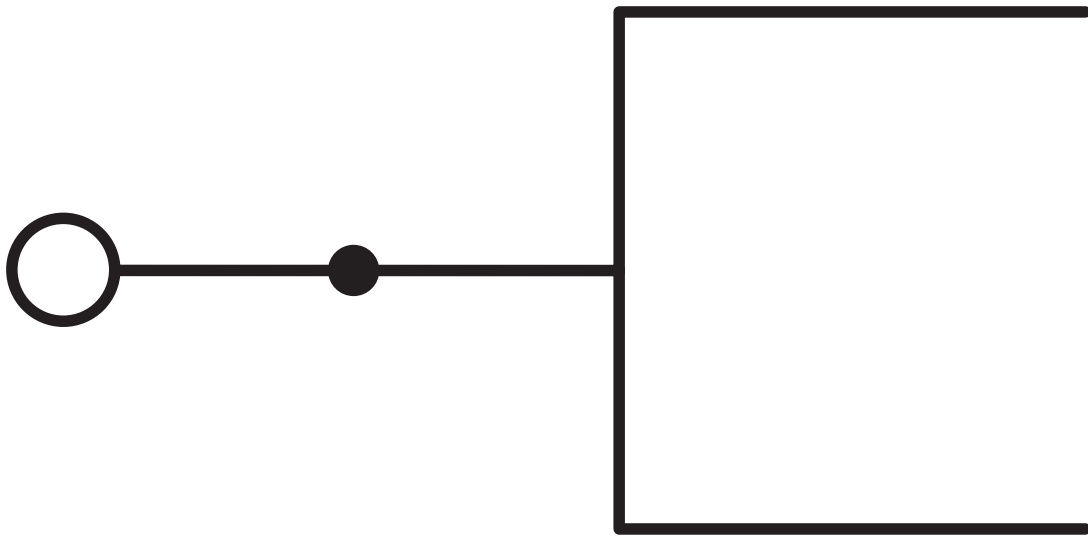


3002034

<https://www.phoenixcontact.com/sg/products/3002034>

Drawings

Circuit diagram

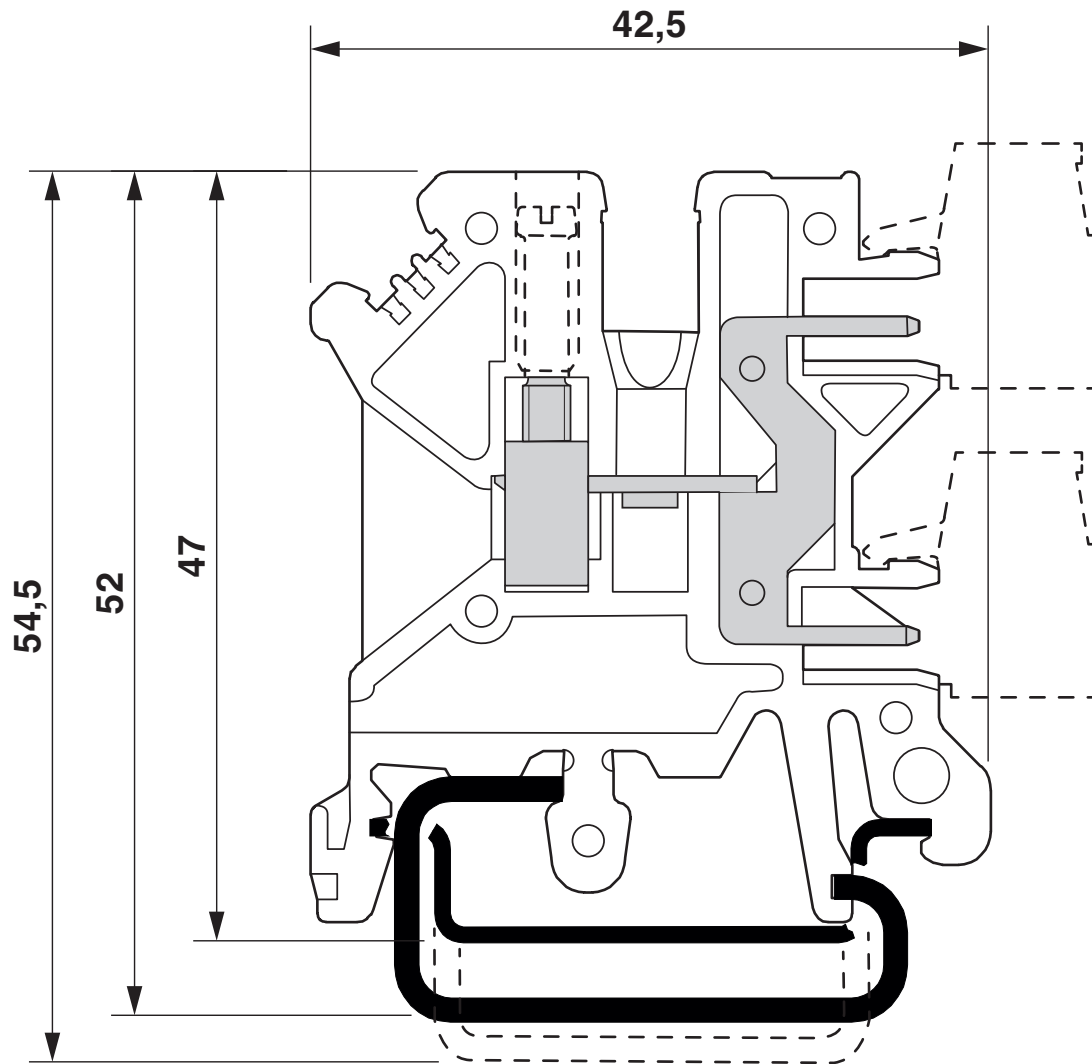


UK 3-MSTB-5,08 - Feed-through terminal block

3002034

<https://www.phoenixcontact.com/sg/products/3002034>

Dimensional drawing



UK 3-MSTB-5,08 - Feed-through terminal block





3002034

<https://www.phoenixcontact.com/sg/products/3002034>

Approvals

To download certificates, visit the product detail page: <https://www.phoenixcontact.com/sg/products/3002034>

|  CSA Approval ID: 13631 | | | | |
|--|-----------------------|-----------------------|-------------------|-----------------------------|
| | Nominal voltage U_N | Nominal current I_N | Cross section AWG | Cross section mm^2 |
| | 300 V | 20 A | 28 - 12 | - |

|  cULus Recognized Approval ID: E60425 | | | | |
|--|-----------------------|-----------------------|-------------------|-----------------------------|
| | Nominal voltage U_N | Nominal current I_N | Cross section AWG | Cross section mm^2 |
| Use group F | | | | |
| | 250 V | 10 A | 30 - 12 | - |
| Use group D | | | | |
| | 300 V | 10 A | 30 - 12 | - |

UK 3-MSTB-5,08 - Feed-through terminal block



3002034

<https://www.phoenixcontact.com/sg/products/3002034>

Classifications

ECLASS

| | |
|-------------|----------|
| ECLASS-11.0 | 27141120 |
| ECLASS-13.0 | 27250101 |

ETIM

| | |
|----------|----------|
| ETIM 9.0 | EC000897 |
|----------|----------|

UNSPSC

| | |
|-------------|----------|
| UNSPSC 21.0 | 39121400 |
|-------------|----------|

3002034

<https://www.phoenixcontact.com/sg/products/3002034>

Environmental product compliance

EU RoHS

| | |
|---|------|
| Fulfills EU RoHS substance requirements | Yes |
| Exemption | 6(c) |

China RoHS

| | |
|--|---|
| Environment friendly use period (EFUP) | EFUP-50 |
| | An article-related China RoHS declaration table can be found in the download area for the respective article under "Manufacturer declaration". For all articles with EFUP-E, no China RoHS declaration table issued and required. |

EU REACH SVHC

| | |
|-------------------------------------|--------------------------------------|
| REACH candidate substance (CAS No.) | Lead(CAS: 7439-92-1) |
| SCIP | 60754feb-c58a-467e-9126-3cc008a0e56b |

Phoenix Contact 2025 © - all rights reserved

<https://www.phoenixcontact.com>

PHOENIX CONTACT SEA Pte. Ltd.

105 Eunos Avenue 3, #04-00

Singapore 409836

+65 6228 4900

marketing@phoenixcontact.com.sg