

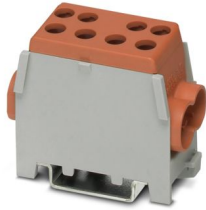
# UDB 2X35/25 BN - Trunk line branch terminal



3071352

<https://www.phoenixcontact.com/sg/products/3071352>

Please be informed that the data shown in this PDF document is generated from our online catalog. Please find the complete data in the user documentation. Our general terms of use for downloads are valid.



Trunk line branch terminal, nom. voltage: 400 V, nominal current: 125 A, number of connections: 4, number of positions: 1, connection method: Screw connection, 1 level, Rated cross section: 35 mm<sup>2</sup>, cross section: 10 mm<sup>2</sup> - 35 mm<sup>2</sup>, Screw connection, 2nd level, cross section: 1.5 mm<sup>2</sup> - 25 mm<sup>2</sup>, mounting type: NS 35/7,5, NS 35/15, color: brown

## Your advantages

- The branch terminal is suitable for the simple voltage pick-off of main supply cables
- Conformance with DIN VDE 0603-2/EN 60998-1

## Commercial data

Item number	3071352
Packing unit	5 pc
Minimum order quantity	5 pc
Sales key	*****
Product key	BE1213
Catalog page	Page 581 (C-1-2019)
GTIN	4046356735971
Weight per piece (including packing)	80.11 g
Weight per piece (excluding packing)	80.11 g
Customs tariff number	85369010
Country of origin	DE

## Technical data

### Notes

General	Up to 3 terminal blocks alignable
---------	-----------------------------------

### Product properties

Product type	Feed-through terminal block
Number of positions	1
Number of connections	4
Number of rows	1
Potentials	1

### Insulation characteristics

Overvoltage category	III
Degree of pollution	3

### Electrical properties

Rated surge voltage	8 kV
Maximum power dissipation for nominal condition	4.06 W

### Connection data

Number of connections per level	4
Nominal cross section	35 mm <sup>2</sup>

#### 1 level

Screw thread	M6/M8
Tightening torque	... 4 Nm
Stripping length	25 mm
Connection in acc. with standard	IEC 60998-1
Conductor cross section rigid	10 mm <sup>2</sup> ... 35 mm <sup>2</sup>
Cross section AWG	6 ... 2 (converted acc. to IEC)
Conductor cross section flexible	10 mm <sup>2</sup> ... 25 mm <sup>2</sup>
Conductor cross section, flexible [AWG]	6 ... 4 (converted acc. to IEC)
Conductor cross-section flexible (ferrule without plastic sleeve)	10 mm <sup>2</sup> ... 25 mm <sup>2</sup>
Flexible conductor cross section (ferrule with plastic sleeve)	10 mm <sup>2</sup> ... 16 mm <sup>2</sup>
Nominal current	125 A
Maximum load current	125 A
Nominal voltage	400 V (max. 1000 V)
Note	Use ferrules for stranded conductors
Nominal cross section	35 mm <sup>2</sup>

#### 2nd level

Stripping length	25 mm
Connection in acc. with standard	IEC 60998-1
Conductor cross section rigid	1.5 mm <sup>2</sup> ... 25 mm <sup>2</sup>

# UDB 2X35/25 BN - Trunk line branch terminal



3071352

<https://www.phoenixcontact.com/sg/products/3071352>

Conductor cross-section flexible (ferrule without plastic sleeve)	1.5 mm <sup>2</sup> ... 16 mm <sup>2</sup>
Flexible conductor cross section (ferrule with plastic sleeve)	1.5 mm <sup>2</sup> ... 10 mm <sup>2</sup>

## Dimensions

Width	27 mm
Height	55 mm
Depth on NS 35/7,5	46 mm
Depth on NS 35/15	53.5 mm

## Material specifications

Color	brown (RAL 8028)
Flammability rating according to UL 94	V0
Insulating material group	I
Insulating material	PA

## Mechanical properties

### Mechanical data

Open side panel	No
-----------------	----

## Environmental and real-life conditions

### Ambient conditions

Ambient temperature (operation)	-60 °C ... 110 °C (Operating temperature range incl. self-heating; for max. short-term operating temperature, see RTI Elec.)
Ambient temperature (storage/transport)	-25 °C ... 60 °C (for a short time, not exceeding 24 h, -60 °C to +70 °C)
Ambient temperature (assembly)	-5 °C ... 70 °C
Ambient temperature (actuation)	-5 °C ... 70 °C
Permissible humidity (operation)	20 % ... 90 %
Permissible humidity (storage/transport)	30 % ... 70 %

## Standards and regulations

Connection in acc. with standard	IEC 60998-1
	IEC 60998-1

## Mounting

Mounting type	NS 35/7,5
	NS 35/15

# UDB 2X35/25 BN - Trunk line branch terminal



3071352

<https://www.phoenixcontact.com/sg/products/3071352>

## Drawings

### Circuit diagram



# UDB 2X35/25 BN - Trunk line branch terminal



3071352

<https://www.phoenixcontact.com/sg/products/3071352>

## Approvals

To download certificates, visit the product detail page: <https://www.phoenixcontact.com/sg/products/3071352>



**EAC**

Approval ID: RU C-DE.A\*30.B.01742



**VDE Zeichengenehmigung**

Approval ID: 40055082



**EAC**

Approval ID: EACKZ 08593

# UDB 2X35/25 BN - Trunk line branch terminal



3071352

<https://www.phoenixcontact.com/sg/products/3071352>

## Classifications

### ECLASS

ECLASS-11.0	27141120
ECLASS-13.0	27250119

### ETIM

ETIM 9.0	EC000897
----------	----------

### UNSPSC

UNSPSC 21.0	39121400
-------------	----------

# UDB 2X35/25 BN - Trunk line branch terminal



3071352

<https://www.phoenixcontact.com/sg/products/3071352>

## Environmental product compliance

### EU RoHS

Fulfills EU RoHS substance requirements	Yes, No exemptions
---	--------------------

### China RoHS

Environment friendly use period (EFUP)	EFUP-E
	No hazardous substances above the limits

### EU REACH SVHC

REACH candidate substance (CAS No.)	No substance above 0.1 wt%
-------------------------------------	----------------------------

Phoenix Contact 2025 © - all rights reserved  
<https://www.phoenixcontact.com>

PHOENIX CONTACT SEA Pte. Ltd.  
105 Eunos Avenue 3, #04-00  
Singapore 409836  
+65 6228 4900  
[marketing@phoenixcontact.com.sg](mailto:marketing@phoenixcontact.com.sg)