

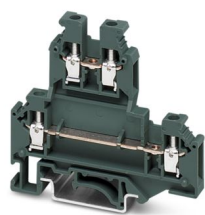
TB 4-2L I RD - Multi-level terminal block



3000956

<https://www.phoenixcontact.com/sg/products/3000956>

Please be informed that the data shown in this PDF document is generated from our online catalog. Please find the complete data in the user documentation. Our general terms of use for downloads are valid.



Multi-level terminal block, upper and lower level bridgeable, nom. voltage: 500 V, nominal current: 32 A, connection method: Screw connection, cross section: 0.5 mm² - 6 mm², mounting type: NS 35/7,5, NS 35/15, NS 32, color: red

Commercial data

Item number	3000956
Packing unit	50 pc
Minimum order quantity	50 pc
Sales key	*****
Product key	BE1414
GTIN	4046356763318
Weight per piece (including packing)	14.59 g
Weight per piece (excluding packing)	14.59 g

TB 4-2L I RD - Multi-level terminal block



3000956

<https://www.phoenixcontact.com/sg/products/3000956>

Technical data

Product properties

Product type	Multi-level terminal block
Number of connections	4
Number of rows	2
Potentials	2

Insulation characteristics

Overvoltage category	III
Degree of pollution	3

Electrical properties

Rated surge voltage	6 kV
---------------------	------

Connection data

Number of connections per level	2
Nominal cross section	4 mm ²
Rated cross section AWG	10

Level 1+2 above 1 below 1

Screw thread	M3
Note	Terminal point
Tightening torque	0.5 ... 0.6 Nm
Stripping length	8 mm
Connection in acc. with standard	IEC 60947-7-1
Conductor cross section rigid	0.5 mm ² ... 6 mm ²
Cross section AWG	20 ... 10 (converted acc. to IEC)
Conductor cross section flexible	0.5 mm ² ... 4 mm ²
Conductor cross section, flexible [AWG]	20 ... 12 (converted acc. to IEC)
Conductor cross-section flexible (ferrule without plastic sleeve)	0.5 mm ² ... 4 mm ²
Flexible conductor cross section (ferrule with plastic sleeve)	0.5 mm ² ... 2.5 mm ²
Cross-section with insertion bridge, rigid	0.5 mm ² ... 4 mm ²
Cross-section with insertion bridge, flexible	0.5 mm ² ... 4 mm ²
Cross-section with insertion bridge, flexible, with ferrule without plastic sleeve	0.5 mm ² ... 2.5 mm ²
Cross-section with insertion bridge, flexible, with ferrule with plastic sleeve	0.5 mm ² ... 1.5 mm ²
2 conductors with same cross section, solid	0.5 mm ² ... 2.5 mm ²
2 conductors with the same cross-section AWG rigid	20 ... 12 (converted acc. to IEC)
2 conductors with same cross section, flexible	0.5 mm ² ... 2.5 mm ²
2 conductors with the same cross-section AWG flexible	20 ... 12 (converted acc. to IEC)
2 conductors with same cross section, flexible, with ferrule without plastic sleeve	0.5 mm ² ... 1.5 mm ²
Nominal current	32 A (with 4 mm ² conductor cross section)

TB 4-2L I RD - Multi-level terminal block



3000956

<https://www.phoenixcontact.com/sg/products/3000956>

Maximum load current	32 A
Nominal voltage	500 V

Dimensions

Width	6.2 mm
End cover width	2.5 mm

Material specifications

Color	red
Flammability rating according to UL 94	V0
Insulating material group	I
Insulating material	PA

Mechanical properties

Mechanical data

Open side panel	Yes
-----------------	-----

Environmental and real-life conditions

Ambient conditions

Ambient temperature (operation)	-60 °C ... 110 °C (Operating temperature range incl. self-heating; for max. short-term operating temperature, see RTI Elec.)
Ambient temperature (storage/transport)	-25 °C ... 60 °C (for a short time, not exceeding 24 h, -60 °C to +70 °C)
Ambient temperature (assembly)	-5 °C ... 70 °C
Ambient temperature (actuation)	-5 °C ... 70 °C
Permissible humidity (operation)	20 % ... 90 %
Permissible humidity (storage/transport)	30 % ... 70 %

Standards and regulations

Connection in acc. with standard	IEC 60947-7-1
----------------------------------	---------------

Mounting

Mounting type	NS 35/7,5
	NS 35/15
	NS 32

TB 4-2L I RD - Multi-level terminal block



3000956

<https://www.phoenixcontact.com/sg/products/3000956>

Classifications

ECLASS

ECLASS-11.0	27141120
ECLASS-13.0	27250102

ETIM

ETIM 9.0	EC000897
----------	----------

TB 4-2L I RD - Multi-level terminal block



3000956

<https://www.phoenixcontact.com/sg/products/3000956>

Environmental product compliance

China RoHS

Environment friendly use period (EFUP)	EFUP-E
	No hazardous substances above the limits

EU REACH SVHC

REACH candidate substance (CAS No.)	No substance above 0.1 wt%
-------------------------------------	----------------------------

Phoenix Contact 2025 © - all rights reserved
<https://www.phoenixcontact.com>

PHOENIX CONTACT SEA Pte. Ltd.
105 Eunos Avenue 3, #04-00
Singapore 409836
+65 6228 4900
marketing@phoenixcontact.com.sg