

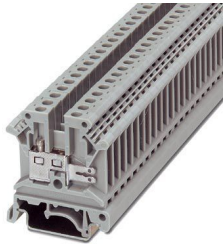
UK 4-FSR(2-2,8-0,8) - Feed-through terminal block



3019014

<https://www.phoenixcontact.com/sg/products/3019014>

Please be informed that the data shown in this PDF document is generated from our online catalog. Please find the complete data in the user documentation. Our general terms of use for downloads are valid.



Feed-through terminal block, nom. voltage: 800 V, nominal current: 20 A, 1st level connection left, connection method: Screw connection, cross section: 0.2 mm² - 4 mm², 1st level connection right, connection method: Spade connection, mounting: NS 35/7,5, NS 35/15, NS 32, color: gray

Commercial data

Item number	3019014
Packing unit	50 pc
Minimum order quantity	1 pc
Sales key	0100*
Product key	BE511X
Catalog page	Page 260 (CL-2002)
GTIN	4017918092122
Weight per piece (including packing)	8.585 g
Weight per piece (excluding packing)	8.344 g
Customs tariff number	85369010
Country of origin	DE

UK 4-FSR(2-2,8-0,8) - Feed-through terminal block



3019014

<https://www.phoenixcontact.com/sg/products/3019014>

Technical data

Product properties

Product type	Feed-through terminal block
Number of connections	2
Number of rows	1

Insulation characteristics

Overvoltage category	III
Degree of pollution	3

Electrical properties

Rated surge voltage	8 kV
Maximum power dissipation for nominal condition	0 W

Connection data

Number of connections per level	2
---------------------------------	---

1st level connection left

Screw thread	M3
Tightening torque	0.6 ... 0.8 Nm
Stripping length	9 mm
Connection in acc. with standard	IEC / EN
Conductor cross section rigid	0.2 mm ² ... 4 mm ²
Cross section AWG	24 ... 12 (converted acc. to IEC)
Conductor cross section flexible	0.2 mm ² ... 4 mm ²
Conductor cross section, flexible [AWG]	24 ... 12 (converted acc. to IEC)
Conductor cross-section flexible (ferrule without plastic sleeve)	0.25 mm ² ... 4 mm ²
Flexible conductor cross section (ferrule with plastic sleeve)	0.25 mm ² ... 2.5 mm ²
Cross-section with insertion bridge, rigid	2.5 mm ²
Cross-section with insertion bridge, flexible	2.5 mm ²
2 conductors with same cross section, solid	0.2 mm ² ... 1 mm ²
2 conductors with same cross section, flexible	0.2 mm ² ... 1.5 mm ²
2 conductors with same cross section, flexible, with ferrule without plastic sleeve	0.25 mm ² ... 1.5 mm ²
2 conductors with the same cross section, flexible, with TWIN ferrule with plastic sleeve	0.5 mm ² ... 2.5 mm ²
Nominal current	20 A
Maximum load current	20 A (with 4 mm ² conductor cross section)
Nominal voltage	800 V

1st level connection right

Spade connection	6.3/2.8 x 0.8 mm
Connection in acc. with standard	IEC / EN
Nominal current	current data for slip-on connections in acc. with DIN 61210 are also dependent on nominal size, material, insulation of the sleeve

UK 4-FSR(2-2,8-0,8) - Feed-through terminal block



3019014

<https://www.phoenixcontact.com/sg/products/3019014>

	and conductor cross section.
Nominal voltage	voltage data for slip-on connections in acc. with DIN 61210 are also dependent on nominal size, material, insulation of the sleeve and conductor cross section.

Dimensions

Width	6.2 mm
End cover width	1.8 mm

Material specifications

Color	gray (RAL 7042)
Flammability rating according to UL 94	V2
Insulating material group	I
Insulating material	PA

Mechanical properties

Mechanical data

Open side panel	Yes
-----------------	-----

Environmental and real-life conditions

Ambient conditions

Ambient temperature (operation)	-60 °C ... 105 °C (max. short-term operating temperature RTI Elec.)
Ambient temperature (storage/transport)	-25 °C ... 60 °C (for a short time, not exceeding 24 h, -60 °C to +70 °C)
Ambient temperature (assembly)	-5 °C ... 70 °C
Ambient temperature (actuation)	-5 °C ... 70 °C
Permissible humidity (storage/transport)	30 % ... 70 %

Standards and regulations

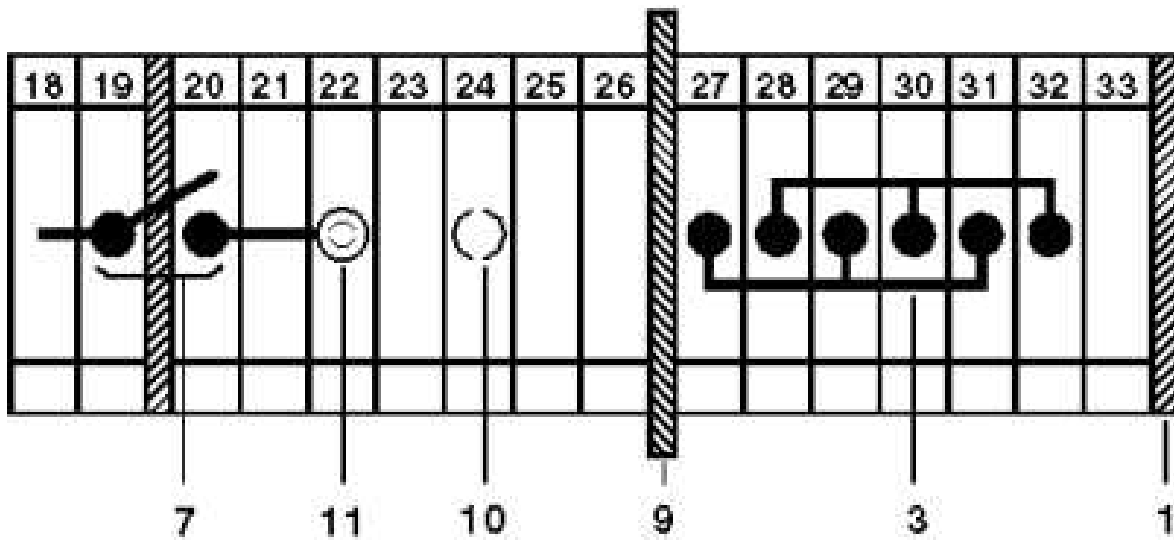
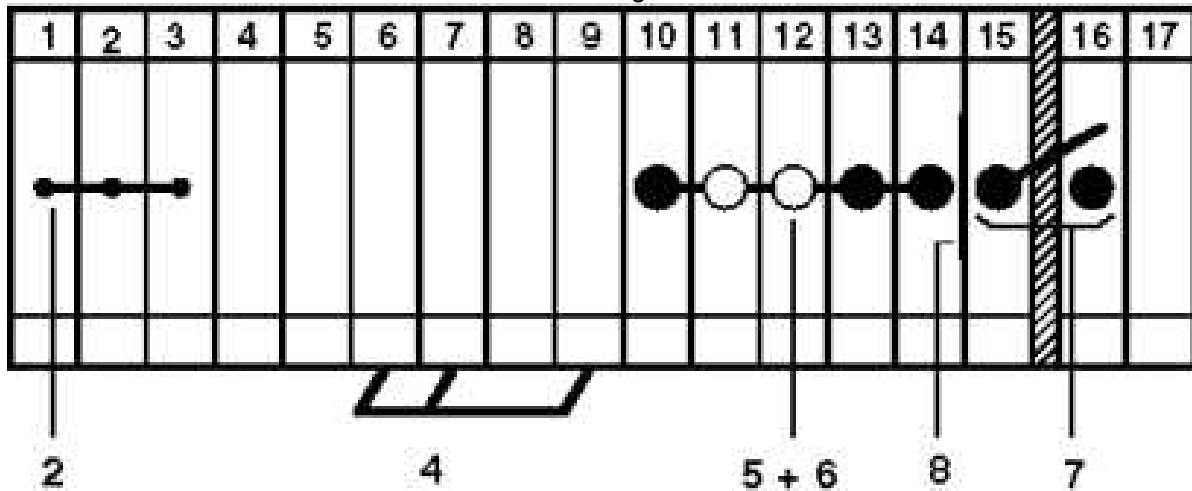
Connection in acc. with standard	IEC / EN
	IEC / EN

Mounting

Mounting type	NS 35/7,5
	NS 35/15
	NS 32

Drawings

Circuit diagram



- 1 = Cover
- 2 = Fixed bridge
- 3 = L-bridge
- 4 = Insertion bridge
- 5 = Isolator bridge bar
- 6 = Isolator bridge
- 7 = Bridge bar for 2 terminal blocks
- 8 = Insulation plate
- 9 = Partition plate
- 10 = Test socket, for test pick-off with MPS test plug or RPS reducing plug
- 11 = Test socket, insulated, can only be used with FBI, ISSBI

UK 4-FSR(2-2,8-0,8) - Feed-through terminal block



3019014

<https://www.phoenixcontact.com/sg/products/3019014>

Classifications

ECLASS

ECLASS-11.0	27141120
ECLASS-13.0	27250101

ETIM

ETIM 9.0	EC000897
----------	----------

UNSPSC

UNSPSC 21.0	39121400
-------------	----------

UK 4-FSR(2-2,8-0,8) - Feed-through terminal block



3019014

<https://www.phoenixcontact.com/sg/products/3019014>

Environmental product compliance

EU RoHS

Fulfills EU RoHS substance requirements	Yes, No exemptions
---	--------------------

China RoHS

Environment friendly use period (EFUP)	EFUP-E
	No hazardous substances above the limits

EU REACH SVHC

REACH candidate substance (CAS No.)	No substance above 0.1 wt%
-------------------------------------	----------------------------

Phoenix Contact 2025 © - all rights reserved
<https://www.phoenixcontact.com>

PHOENIX CONTACT SEA Pte. Ltd.
105 Eunos Avenue 3, #04-00
Singapore 409836
+65 6228 4900
marketing@phoenixcontact.com.sg