

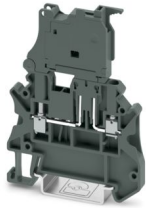
TB-EE-UTF 2,5-HESILED 24 (5X20) - Fuse modular terminal block



1428643

<https://www.phoenixcontact.com/sg/products/1428643>

Please be informed that the data shown in this PDF document is generated from our online catalog. Please find the complete data in the user documentation. Our general terms of use for downloads are valid.



Fuse terminal block, fuse type: G / 5 x 20, nominal operating voltage: 24 V, rated current: 6.3 A, nominal cross-section: 2.5 mm², cross-section: 0.5 mm² - 2.5 mm², mounting types: NS 35/7,5, NS 35/15, color: dark gray

Commercial data

Item number	1428643
Packing unit	50 pc
Minimum order quantity	50 pc
Note	Made to order (non-returnable)
Sales key	*****
Product key	BEK134
GTIN	4063151794033
Weight per piece (including packing)	12.5 g
Weight per piece (excluding packing)	12.5 g
Country of origin	CN

TB-EE-UTF 2,5-HESILED 24 (5X20) - Fuse modular terminal block



1428643

<https://www.phoenixcontact.com/sg/products/1428643>

Technical data

Product properties

Product type	Fuse terminal block
Number of positions	1
Number of connections	2
Number of rows	1
Potentials	1

Insulation characteristics

Overvoltage category	III
Degree of pollution	3

Electrical properties

Rated surge voltage	6 kV
Fuse	G / 5 x 20
LED voltage range	15 V AC/DC ... 30 V AC/DC
LED current range	1 mA ... 2.5 mA

Connection data

Number of connections per level	2
Nominal cross section	2.5 mm ²
Rated cross section AWG	12
Screw thread	M2.5
Tightening torque	0.4 ... 0.5 Nm
Stripping length	7 mm
Internal cylindrical gage	A2 B2
Connection in acc. with standard	IEC 60947-7-3
Conductor cross section rigid	0.5 mm ² ... 2.5 mm ²
Cross section AWG	20 ... 14 (converted acc. to IEC)
Conductor cross section flexible	0.5 mm ² ... 2.5 mm ²
Conductor cross section, flexible [AWG]	20 ... 14 (converted acc. to IEC)
Conductor cross-section flexible (ferrule without plastic sleeve)	0.5 mm ² ... 2.5 mm ²
Flexible conductor cross section (ferrule with plastic sleeve)	0.5 mm ² ... 2.5 mm ²
Nominal current	6.3 A (the current is determined by the fuse used)
Maximum load current	6.3 A
Nominal voltage	24 V (the voltage is determined by the light indicator.)
Nominal cross section	2.5 mm ²

Dimensions

Width	6.2 mm
-------	--------

TB-EE-UTF 2,5-HESILED 24 (5X20) - Fuse modular terminal block



1428643

<https://www.phoenixcontact.com/sg/products/1428643>

Material specifications

Color	dark gray
Flammability rating according to UL 94	V0
Insulating material group	I
Insulating material	PA
Static insulating material application in cold	-60 °C
Relative insulation material temperature index (Elec., UL 746 B)	130 °C
Fire protection for rail vehicles (DIN EN 45545-2) R22	HL 1 - HL 3
Fire protection for rail vehicles (DIN EN 45545-2) R23	HL 1 - HL 3
Fire protection for rail vehicles (DIN EN 45545-2) R24	HL 1 - HL 3
Fire protection for rail vehicles (DIN EN 45545-2) R26	HL 1 - HL 3
Surface flammability NFPA 130 (ASTM E 162)	passed
Specific optical density of smoke NFPA 130 (ASTM E 662)	passed
Smoke gas toxicity NFPA 130 (SMP 800C)	passed

Mechanical properties

Mechanical data

Open side panel	Yes
-----------------	-----

Environmental and real-life conditions

Ambient conditions

Ambient temperature (operation)	-60 °C ... 110 °C (Operating temperature range incl. self-heating; for max. short-term operating temperature, see RTI Elec.)
Ambient temperature (storage/transport)	-25 °C ... 60 °C
Ambient temperature (assembly)	-5 °C ... 70 °C
Ambient temperature (actuation)	-5 °C ... 70 °C
Permissible humidity (operation)	20 % ... 90 %
Permissible humidity (storage/transport)	30 % ... 70 %

Standards and regulations

Connection in acc. with standard	IEC 60947-7-3
----------------------------------	---------------

Mounting

Mounting type	NS 35/7,5
	NS 35/15

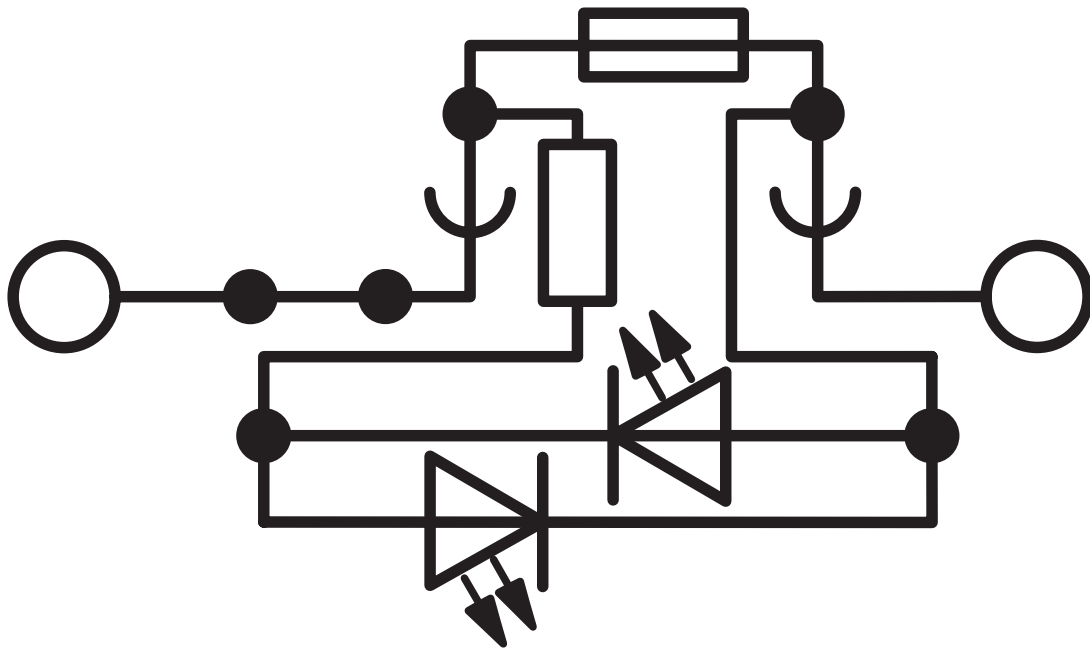
TB-EE-UTF 2,5-HESILED 24 (5X20) - Fuse modular terminal block

1428643

<https://www.phoenixcontact.com/sg/products/1428643>

Drawings

Circuit diagram



TB-EE-UTF 2,5-HESILED 24 (5X20) - Fuse modular terminal block



1428643

<https://www.phoenixcontact.com/sg/products/1428643>

Classifications

ECLASS

ECLASS-11.0	27141116
ECLASS-12.0	27141116
ECLASS-13.0	27250113

ETIM

ETIM 9.0	EC000899
----------	----------

TB-EE-UTF 2,5-HESILED 24 (5X20) - Fuse modular terminal block



1428643

<https://www.phoenixcontact.com/sg/products/1428643>

Environmental product compliance

EU RoHS

Fulfills EU RoHS substance requirements	Yes, No exemptions
---	--------------------

China RoHS

Environment friendly use period (EFUP)	EFUP-E
	No hazardous substances above the limits

EU REACH SVHC

REACH candidate substance (CAS No.)	No substance above 0.1 wt%
-------------------------------------	----------------------------

Phoenix Contact 2025 © - all rights reserved
<https://www.phoenixcontact.com>

PHOENIX CONTACT SEA Pte. Ltd.
105 Eunos Avenue 3, #04-00
Singapore 409836
+65 6228 4900
marketing@phoenixcontact.com.sg