

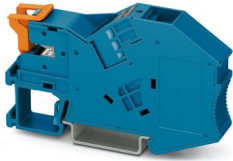
PTI 16-NLS-FI BU - Installation terminal block



1030131

<https://www.phoenixcontact.com/sg/products/1030131>

Please be informed that the data shown in this PDF document is generated from our online catalog. Please find the complete data in the user documentation. Our general terms of use for downloads are valid.



Installation terminal block, with end bracket function, nom. voltage: 1000 V, nominal current: 70 A, Push-in connection, 1 level, Rated cross section: 16 mm², cross section: 0.5 mm² - 25 mm², mounting type: NS 35/7,5, NS 35/15, color: blue

Commercial data

| | |
|--------------------------------------|---------------------|
| Item number | 1030131 |
| Packing unit | 10 pc |
| Minimum order quantity | 10 pc |
| Sales key | ***** |
| Product key | BE2252 |
| Catalog page | Page 127 (C-1-2019) |
| GTIN | 4055626532479 |
| Weight per piece (including packing) | 31.647 g |
| Weight per piece (excluding packing) | 28.647 g |
| Customs tariff number | 85369010 |
| Country of origin | PL |

PTI 16-NLS-FI BU - Installation terminal block



1030131

<https://www.phoenixcontact.com/sg/products/1030131>

Technical data

Notes

| | |
|---------------------|---------------------------|
| Note on application | with end bracket function |
|---------------------|---------------------------|

Product properties

| | |
|-----------------------|-----------------------------|
| Product type | Installation terminal block |
| Number of connections | 1 |
| Number of rows | 1 |
| Potentials | 1 |

Insulation characteristics

| | |
|----------------------|-----|
| Overvoltage category | III |
| Degree of pollution | 3 |

Electrical properties

| | |
|---|--------|
| Rated surge voltage | 6 kV |
| Maximum power dissipation for nominal condition | 2.43 W |
| Current carrying capacity of the neutral busbar | 140 A |

Connection data

| | |
|---------------------------------|--------------------|
| Number of connections per level | 1 |
| Nominal cross section | 16 mm ² |

1 level

| | |
|---|---|
| Stripping length | 18 mm ... 20 mm |
| Internal cylindrical gage | A7 |
| Connection in acc. with standard | IEC 60947-7-1 |
| Conductor cross section rigid | 0.5 mm ² ... 25 mm ² |
| Cross section AWG | 20 ... 4 (converted acc. to IEC) |
| Conductor cross section flexible | 0.5 mm ² ... 16 mm ² |
| Conductor cross section, flexible [AWG] | 20 ... 6 (converted acc. to IEC) |
| Conductor cross-section flexible (ferrule without plastic sleeve) | 0.5 mm ² ... 16 mm ² |
| Flexible conductor cross section (ferrule with plastic sleeve) | 0.5 mm ² ... 16 mm ² |
| 2 conductors with the same cross section, flexible, with TWIN ferrule with plastic sleeve | 1.5 mm ² ... 4 mm ² |
| Nominal current | 70 A (for 16 mm ² conductor cross section) |
| Maximum load current | 76 A |
| Nominal voltage | 1000 V |
| Nominal cross section | 16 mm ² |

1 level Connection cross sections directly pluggable

| | |
|---|--|
| Conductor cross section rigid | 2.5 mm ² ... 25 mm ² |
| Conductor cross-section flexible (ferrule without plastic sleeve) | 2.5 mm ² ... 16 mm ² |
| Flexible conductor cross section (ferrule with plastic sleeve) | 2.5 mm ² ... 16 mm ² |

PTI 16-NLS-FI BU - Installation terminal block



1030131

<https://www.phoenixcontact.com/sg/products/1030131>

Dimensions

| | |
|--------------------|---------|
| Width | 12.2 mm |
| Height | 81.9 mm |
| Depth | 46.8 mm |
| Depth on NS 35/7,5 | 48.5 mm |
| Depth on NS 35/15 | 56 mm |

Material specifications

| | |
|---|-----------------|
| Color | blue (RAL 5015) |
| Flammability rating according to UL 94 | V0 |
| Insulating material group | I |
| Insulating material | PA |
| Static insulating material application in cold | -60 °C |
| Temperature index of insulation material (DIN EN 60216-1 (VDE 0304-21)) | 130 °C |
| Relative insulation material temperature index (Elec., UL 746 B) | 130 °C |
| Fire protection for rail vehicles (DIN EN 45545-2) R22 | HL 1 - HL 3 |
| Fire protection for rail vehicles (DIN EN 45545-2) R23 | HL 1 - HL 3 |
| Fire protection for rail vehicles (DIN EN 45545-2) R24 | HL 1 - HL 3 |
| Fire protection for rail vehicles (DIN EN 45545-2) R26 | HL 1 - HL 3 |
| Calorimetric heat release NFPA 130 (ASTM E 1354) | 28 MJ/kg |
| Surface flammability NFPA 130 (ASTM E 162) | passed |
| Specific optical density of smoke NFPA 130 (ASTM E 662) | passed |
| Smoke gas toxicity NFPA 130 (SMP 800C) | passed |

Electrical tests

Surge voltage test

| | |
|---|-------------|
| Test voltage setpoint | 9.8 kV |
| Result | Test passed |
| Short-time withstand current 16 mm ² | 1.96 kA |
| Short-time withstand current 25 mm ² | 3 kA |
| Result | Test passed |

Power-frequency withstand voltage

| | |
|-----------------------|-------------|
| Test voltage setpoint | 2.2 kV |
| Result | Test passed |

Mechanical properties

Mechanical data

| | |
|-----------------|----|
| Open side panel | No |
|-----------------|----|

Mechanical tests

Mechanical strength

PTI 16-NLS-FI BU - Installation terminal block



1030131

<https://www.phoenixcontact.com/sg/products/1030131>

| | |
|--------|-------------|
| Result | Test passed |
|--------|-------------|

Attachment on the carrier

| | |
|-------------------------|-------------|
| DIN rail/fixing support | NS 35 |
| Test force setpoint | 5 N |
| Result | Test passed |

Test for conductor damage and slackening

| | |
|--------------------------------|------------------------------|
| Rotation speed | 10 rpm |
| Revolutions | 135 |
| Conductor cross section/weight | 0.5 mm ² / 0.3 kg |
| | 16 mm ² / 2.9 kg |
| | 25 mm ² / 4.5 kg |
| Result | Test passed |

Environmental and real-life conditions

Aging

| | |
|--------------------|-------------|
| Temperature cycles | 192 |
| Result | Test passed |

Needle-flame test

| | |
|------------------|-------------|
| Time of exposure | 30 s |
| Result | Test passed |

Oscillation/broadband noise

| | |
|------------------------|--|
| Specification | DIN EN 50155 (VDE 0115-200):2008-03 |
| Spectrum | Long life test category 2, bogie-mounted |
| Frequency | $f_1 = 5 \text{ Hz}$ to $f_2 = 250 \text{ Hz}$ |
| ASD level | 6.12 (m/s ²) ² /Hz |
| Acceleration | 3.12g |
| Test duration per axis | 5 h |
| Test directions | X-, Y- and Z-axis |
| Result | Test passed |

Shocks

| | |
|--------------------------------|-------------------------------------|
| Specification | DIN EN 50155 (VDE 0115-200):2008-03 |
| Pulse shape | Half-sine |
| Acceleration | 30g |
| Shock duration | 18 ms |
| Number of shocks per direction | 3 |
| Test directions | X-, Y- and Z-axis (pos. and neg.) |
| Result | Test passed |

Ambient conditions

| | |
|---------------------------------|--|
| Ambient temperature (operation) | -60 °C ... 110 °C (Operating temperature range incl. self-heating; for max. short-term operating temperature, see RTI Elec.) |
|---------------------------------|--|

PTI 16-NLS-FI BU - Installation terminal block



1030131

<https://www.phoenixcontact.com/sg/products/1030131>

| | |
|--|---|
| Ambient temperature (storage/transport) | -25 °C ... 60 °C (for a short time, not exceeding 24 h, -60 °C to +70 °C) |
| Ambient temperature (assembly) | -5 °C ... 70 °C |
| Ambient temperature (actuation) | -5 °C ... 70 °C |
| Permissible humidity (operation) | 20 % ... 90 % |
| Permissible humidity (storage/transport) | 30 % ... 70 % |

Standards and regulations

| | |
|----------------------------------|---------------|
| Connection in acc. with standard | IEC 60947-7-1 |
|----------------------------------|---------------|

Mounting

| | |
|---------------|-----------|
| Mounting type | NS 35/7,5 |
| | NS 35/15 |

PTI 16-NLS-FI BU - Installation terminal block



1030131

<https://www.phoenixcontact.com/sg/products/1030131>

Drawings

Circuit diagram



PTI 16-NLS-FI BU - Installation terminal block





1030131

<https://www.phoenixcontact.com/sg/products/1030131>


Approvals


To download certificates, visit the product detail page: <https://www.phoenixcontact.com/sg/products/1030131>


|  CSA Approval ID: 13631 | | | | |
|--|-----------------------|-----------------------|-------------------|-----------------------------|
| | Nominal voltage U_N | Nominal current I_N | Cross section AWG | Cross section mm^2 |
| Use group B | 600 V | 70 A | 20 - 4 | - |
| Use group C | 600 V | 70 A | 20 - 4 | - |


|  IECEE CB Scheme Approval ID: DE1-62997 | | | | |
|--|-----------------------|-----------------------|-------------------|-----------------------------|
| | Nominal voltage U_N | Nominal current I_N | Cross section AWG | Cross section mm^2 |
| | 1000 V | 70 A | - | 0.5 - 16 |

|  EAC Approval ID: RU C-DE.BL08.B.00644 | | | | |
|---|--|--|--|--|
|---|--|--|--|--|

|  VDE Zeichengenehmigung Approval ID: 40050357 | | | | |
|--|-----------------------|-----------------------|-------------------|-----------------------------|
| | Nominal voltage U_N | Nominal current I_N | Cross section AWG | Cross section mm^2 |
| | 1000 V | 70 A | - | 0.5 - 16 |

|  cULus Recognized Approval ID: E60425 | | | | |
|--|--|--|--|--|
|--|--|--|--|--|

|  cULus Recognized Approval ID: E60425 | | | | |
|--|--|--|--|--|
|--|--|--|--|--|

|  EAC Approval ID: EACKZ 08593 | | | | |
|--|--|--|--|--|
|--|--|--|--|--|

PTI 16-NLS-FI BU - Installation terminal block



1030131

<https://www.phoenixcontact.com/sg/products/1030131>

Classifications

ECLASS

| | |
|-------------|----------|
| ECLASS-11.0 | 27141125 |
| ECLASS-12.0 | 27141125 |
| ECLASS-13.0 | 27250110 |

ETIM

| | |
|----------|----------|
| ETIM 9.0 | EC001329 |
|----------|----------|

UNSPSC

| | |
|-------------|----------|
| UNSPSC 21.0 | 39121400 |
|-------------|----------|

PTI 16-NLS-FI BU - Installation terminal block



1030131

<https://www.phoenixcontact.com/sg/products/1030131>

Environmental product compliance

EU RoHS

| | |
|---|--------------------|
| Fulfills EU RoHS substance requirements | Yes, No exemptions |
|---|--------------------|

China RoHS

| | |
|--|--|
| Environment friendly use period (EFUP) | EFUP-E |
| | No hazardous substances above the limits |

EU REACH SVHC

| | |
|-------------------------------------|----------------------------|
| REACH candidate substance (CAS No.) | No substance above 0.1 wt% |
|-------------------------------------|----------------------------|

Phoenix Contact 2025 © - all rights reserved
<https://www.phoenixcontact.com>

PHOENIX CONTACT SEA Pte. Ltd.
105 Eunos Avenue 3, #04-00
Singapore 409836
+65 6228 4900
marketing@phoenixcontact.com.sg