

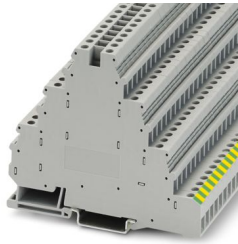
DLK 4-PE KAN - Installation ground terminal block



3026764

<https://www.phoenixcontact.com/sg/products/3026764>

Please be informed that the data shown in this PDF document is generated from our online catalog. Please find the complete data in the user documentation. Our general terms of use for downloads are valid.



Installation ground terminal block, PE connection left, connection method: Screw connection, Rated cross section: 4 mm², cross section: 0.2 mm² - 6 mm², mounting type: NS 35/7,5, NS 35/15, color: gray

Commercial data

Item number	3026764
Packing unit	200 pc
Minimum order quantity	200 pc
Note	Made to order (non-returnable)
Sales key	*****
Product key	BE1225
GTIN	4017918472375
Weight per piece (including packing)	41.97 g
Weight per piece (excluding packing)	41.97 g
Customs tariff number	85369010
Country of origin	PL

DLK 4-PE KAN - Installation ground terminal block



3026764

<https://www.phoenixcontact.com/sg/products/3026764>

Technical data

Product properties

Product type	Ground terminal block
Number of connections	7
Number of rows	4

Insulation characteristics

Overvoltage category	III
Degree of pollution	3

Electrical properties

Rated surge voltage	6 kV
Maximum power dissipation for nominal condition	1.02 W

Connection data

Number of connections per level	2
Nominal cross section	4 mm ²

Level 1+2+3

Screw thread	M3
Note	Please observe the current carrying capacity of the DIN rails.
Tightening torque	0.5 ... 0.6 Nm
Stripping length	8 mm
Internal cylindrical gage	A3
Connection in acc. with standard	IEC 60947-7-1/IEC 60947-7-2
Conductor cross section rigid	0.2 mm ² ... 6 mm ²
Cross section AWG	24 ... 10 (converted acc. to IEC)
Conductor cross section flexible	0.2 mm ² ... 4 mm ²
Conductor cross section, flexible [AWG]	24 ... 12 (converted acc. to IEC)
Conductor cross-section flexible (ferrule without plastic sleeve)	0.25 mm ² ... 4 mm ²
Flexible conductor cross section (ferrule with plastic sleeve)	0.25 mm ² ... 4 mm ²
Nominal cross section	4 mm ²

Dimensions

Width	6.2 mm
-------	--------

Material specifications

Color	gray (RAL 7042)
Flammability rating according to UL 94	V0
Insulating material group	I
Insulating material	PA

Mechanical properties

DLK 4-PE KAN - Installation ground terminal block



3026764

<https://www.phoenixcontact.com/sg/products/3026764>

Mechanical data

Open side panel	No
-----------------	----

Environmental and real-life conditions

Ambient conditions

Ambient temperature (operation)	-60 °C ... 105 °C (max. short-term operating temperature RTI Elec.)
Ambient temperature (storage/transport)	-25 °C ... 60 °C (for a short time, not exceeding 24 h, -60 °C to +70 °C)
Ambient temperature (assembly)	-5 °C ... 70 °C
Ambient temperature (actuation)	-5 °C ... 70 °C
Permissible humidity (storage/transport)	30 % ... 70 %

Standards and regulations

Connection in acc. with standard	IEC 60947-7-1/IEC 60947-7-2
----------------------------------	-----------------------------

Mounting

Mounting type	NS 35/7,5
	NS 35/15

DLK 4-PE KAN - Installation ground terminal block

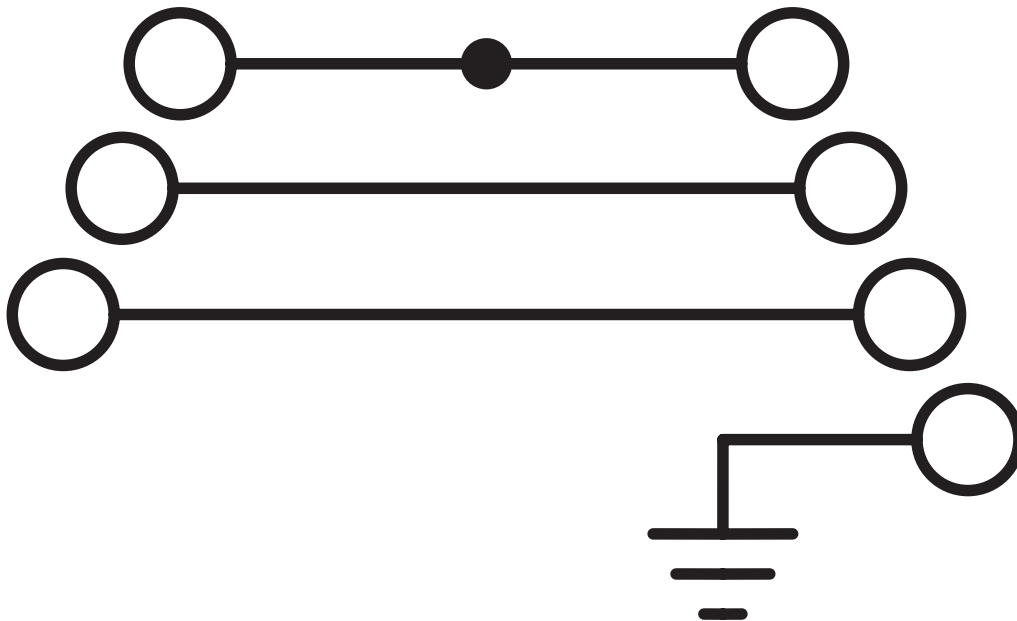


3026764

<https://www.phoenixcontact.com/sg/products/3026764>

Drawings

Circuit diagram



The figure shows PE connection, right

DLK 4-PE KAN - Installation ground terminal block



3026764

<https://www.phoenixcontact.com/sg/products/3026764>

Classifications

ECLASS

ECLASS-11.0

27141141

ETIM

ETIM 8.0

EC000901

UNSPSC

UNSPSC 21.0

39121400

DLK 4-PE KAN - Installation ground terminal block



3026764

<https://www.phoenixcontact.com/sg/products/3026764>

Environmental product compliance

EU RoHS

Fulfills EU RoHS substance requirements	Yes, No exemptions
---	--------------------

China RoHS

Environment friendly use period (EFUP)	EFUP-E
	No hazardous substances above the limits

EU REACH SVHC

REACH candidate substance (CAS No.)	No substance above 0.1 wt%
-------------------------------------	----------------------------

Phoenix Contact 2025 © - all rights reserved
<https://www.phoenixcontact.com>

PHOENIX CONTACT SEA Pte. Ltd.
105 Eunos Avenue 3, #04-00
Singapore 409836
+65 6228 4900
marketing@phoenixcontact.com.sg