

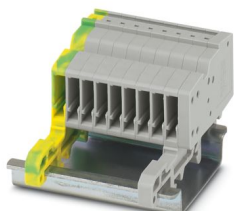
PPC 1,5/S-NS/9 (1GNYE/8GY) - COMBI coupling



3213347

<https://www.phoenixcontact.com/sg/products/3213347>

Please be informed that the data shown in this PDF document is generated from our online catalog. Please find the complete data in the user documentation. Our general terms of use for downloads are valid.



COMBI coupling, nom. voltage: 500 V, nominal current: 17.5 A, number of connections: 1, number of positions: 9, connection method: Push-in connection, 1 level, Rated cross section: 1.5 mm², cross section: 0.14 mm² - 1.5 mm², mounting type: NS 35/15, NS 35/7,5, color: green/yellow-gray

Your advantages

- The Push-in technology COMBI couplings for self-assembly provide solutions that users can implement themselves
- For secure and space-saving accommodation of plug-in contacts in cable ducts and distributor shafts
- Tested for railway applications

Commercial data

| | |
|--------------------------------------|--------------------------------|
| Item number | 3213347 |
| Packing unit | 25 pc |
| Minimum order quantity | 25 pc |
| Note | Made to order (non-returnable) |
| Sales key | ***** |
| Product key | BE2245 |
| GTIN | 4046356993890 |
| Weight per piece (including packing) | 16.158 g |
| Weight per piece (excluding packing) | 16.158 g |
| Customs tariff number | 85366990 |
| Country of origin | PL |

PPC 1,5/S-NS/9 (1GNYE/8GY) - COMBI coupling



3213347

<https://www.phoenixcontact.com/sg/products/3213347>

Technical data

Product properties

| | |
|-----------------------|-------------------|
| Product type | Terminal coupling |
| Area of application | Railway industry |
| | Machine building |
| | Plant engineering |
| Number of positions | 9 |
| Pitch | 3.5 mm |
| Number of connections | 1 |
| Number of rows | 1 |
| Type | other |

Insulation characteristics

| | |
|----------------------|-----|
| Overvoltage category | III |
| Degree of pollution | 3 |

Electrical properties

| | |
|---|--------|
| Rated surge voltage | 6 kV |
| Maximum power dissipation for nominal condition | 0.56 W |

Connection data

| | |
|-----------------------|---------------------|
| Nominal cross section | 1.5 mm ² |
|-----------------------|---------------------|

1 level

| | |
|---|---|
| Stripping length | 8 mm |
| Internal cylindrical gage | A1 / B1 |
| Connection in acc. with standard | IEC 61984 |
| Conductor cross section rigid | 0.14 mm ² ... 1.5 mm ² |
| Cross section AWG | 26 ... 14 (converted acc. to IEC) |
| Conductor cross section flexible | 0.14 mm ² ... 1.5 mm ² |
| Conductor cross section, flexible [AWG] | 26 ... 14 (converted acc. to IEC) |
| Conductor cross-section flexible (ferrule without plastic sleeve) | 0.14 mm ² ... 1.5 mm ² |
| Flexible conductor cross section (ferrule with plastic sleeve) | 0.14 mm ² ... 1 mm ² |
| Nominal current | 17.5 A |
| Maximum load current | 17.5 A (with 1.5 mm ² conductor cross section) |
| Nominal voltage | 500 V |
| Nominal cross section | 1.5 mm ² |

1 level Connection cross sections directly pluggable

| | |
|---|--|
| Conductor cross section rigid | 0.25 mm ² ... 1.5 mm ² |
| Conductor cross-section flexible (ferrule without plastic sleeve) | 0.34 mm ² ... 1.5 mm ² |
| Flexible conductor cross section (ferrule with plastic sleeve) | 0.34 mm ² ... 1 mm ² |

Dimensions

PPC 1,5/S-NS/9 (1GNYE/8GY) - COMBI coupling



3213347

<https://www.phoenixcontact.com/sg/products/3213347>

| | |
|-----------------|---------|
| Width | 31.5 mm |
| End cover width | 2.2 mm |
| Height | 27.1 mm |
| Pitch | 3.5 mm |

Material specifications

| | |
|---|-----------------|
| Color | multicolored |
| | green-yellow |
| | gray (RAL 7042) |
| Flammability rating according to UL 94 | V0 |
| Insulating material group | I |
| Insulating material | PA |
| Static insulating material application in cold | -60 °C |
| Temperature index of insulation material (DIN EN 60216-1 (VDE 0304-21)) | 130 °C |
| Relative insulation material temperature index (Elec., UL 746 B) | 130 °C |
| Fire protection for rail vehicles (DIN EN 45545-2) R22 | HL 1 - HL 3 |
| Fire protection for rail vehicles (DIN EN 45545-2) R23 | HL 1 - HL 3 |
| Fire protection for rail vehicles (DIN EN 45545-2) R24 | HL 1 - HL 3 |
| Fire protection for rail vehicles (DIN EN 45545-2) R26 | HL 1 - HL 3 |
| Calorimetric heat release NFPA 130 (ASTM E 1354) | 28 MJ/kg |
| Surface flammability NFPA 130 (ASTM E 162) | passed |
| Specific optical density of smoke NFPA 130 (ASTM E 662) | passed |
| Smoke gas toxicity NFPA 130 (SMP 800C) | passed |

Mechanical properties

Mechanical data

| | |
|-----------------|-----|
| Open side panel | Yes |
|-----------------|-----|

Environmental and real-life conditions

Ambient conditions

| | |
|--|---|
| Ambient temperature (storage/transport) | -25 °C ... 60 °C (for a short time, not exceeding 24 h, -60 °C to +70 °C) |
| Ambient temperature (assembly) | -5 °C ... 70 °C |
| Ambient temperature (actuation) | -5 °C ... 70 °C |
| Permissible humidity (storage/transport) | 30 % ... 70 % |

Standards and regulations

| | |
|----------------------------------|-----------|
| Connection in acc. with standard | IEC 61984 |
|----------------------------------|-----------|

Mounting

| | |
|---------------|-----------|
| Mounting type | NS 35/15 |
| | NS 35/7,5 |

PPC 1,5/S-NS/9 (1GNYE/8GY) - COMBI coupling

3213347

<https://www.phoenixcontact.com/sg/products/3213347>



Drawings

Circuit diagram



PPC 1,5/S-NS/9 (1GNYE/8GY) - COMBI coupling



3213347

<https://www.phoenixcontact.com/sg/products/3213347>

Classifications

ECLASS

| | |
|-------------|----------|
| ECLASS-11.0 | 27141120 |
|-------------|----------|

ETIM

| | |
|----------|----------|
| ETIM 8.0 | EC000897 |
|----------|----------|

UNSPSC

| | |
|-------------|----------|
| UNSPSC 21.0 | 39121400 |
|-------------|----------|

PPC 1,5/S-NS/9 (1GNYE/8GY) - COMBI coupling



3213347

<https://www.phoenixcontact.com/sg/products/3213347>

Environmental product compliance

EU RoHS

| | |
|---|--------------------|
| Fulfills EU RoHS substance requirements | Yes, No exemptions |
|---|--------------------|

China RoHS

| | |
|--|--|
| Environment friendly use period (EFUP) | EFUP-E |
| | No hazardous substances above the limits |

EU REACH SVHC

| | |
|-------------------------------------|----------------------------|
| REACH candidate substance (CAS No.) | No substance above 0.1 wt% |
|-------------------------------------|----------------------------|

Phoenix Contact 2025 © - all rights reserved
<https://www.phoenixcontact.com>

PHOENIX CONTACT SEA Pte. Ltd.
105 Eunos Avenue 3, #04-00
Singapore 409836
+65 6228 4900
marketing@phoenixcontact.com.sg