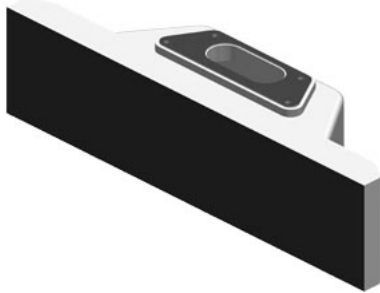


Extension Unit 15" PROFISAFE compatible with all IP65 fully enclosed 16:9 HMI/IPC devices. flexible configuration of control elements; 8 mounting positions; 8 control elements can be installed; PROFISAFE connection (control elements ordered separately)



General information	
Product type designation	Extension Unit 15" PROFIsafe
Control elements	
With parameterizable keys	Yes
Installation type/mounting	
Mounting	For mounting on a 16:9 HMI / IPC PRO device (lower part)
Mounting type	Screwed joint
Rack mounting	No
Front mounting	No
Number of slots for command devices and signaling units	8
RFID reader can be installed	Yes; SIMATIC RF200 Access Control Reader RF1060R
Supply voltage	
Type of supply voltage	DC
Rated value (DC)	24 V
permissible range, lower limit (DC)	19.2 V
permissible range, upper limit (DC)	28.8 V
Input current	
Current consumption (rated value)	150 mA; without load
Power	
Active power input, typ.	3 W; Additionally 0.1 W per control element with LED
Interfaces	
Number of industrial Ethernet interfaces	2; For the construction of lines and rings without external switch
Number of PROFINET interfaces	2; Incl. switch
Protocols	
PROFIsafe	Yes; 1x SIL 2 (two-channel) or 2x SIL 3 (single-channel) emergency stop sensor
Redundancy mode	
Media redundancy	
— MRP	Yes
Test commissioning functions	
Key and signal lamp test	Yes; automatically when switching on
Degree and class of protection	
IP (all-round)	IP65
NEMA (front)	
• Enclosure Type 4x at the front	Yes; All-round
Standards, approvals, certificates	
CE mark	Yes
UL approval	Yes

cULus	Yes
RCM (formerly C-TICK)	Yes
KC approval	Yes
Suitable for safety functions	Yes; e.g. installation of emergency stop
<b>Ambient conditions</b>	
Ambient temperature during operation	
• min.	0 °C
• max.	50 °C
Ambient temperature during storage/transportation	
• min.	-20 °C
• max.	60 °C
Altitude during operation relating to sea level	
• Installation altitude above sea level, max.	2 000 m
Relative humidity	
• Operation, max.	90 %; no condensation
<b>Mechanics/material</b>	
Material	
• Aluminum	Yes
Enclosure material (front)	
• Aluminum	Yes; Knockout covered with black film
<b>Dimensions</b>	
Width	396 mm
Height	99 mm
Depth	100.65 mm
<b>Weights</b>	
Weight (without packaging)	2.5 kg
<b>Scope of supply</b>	
Delivery quantity in pieces	1
Components included	Power supply connector
<b>last modified:</b>	4/21/2021 